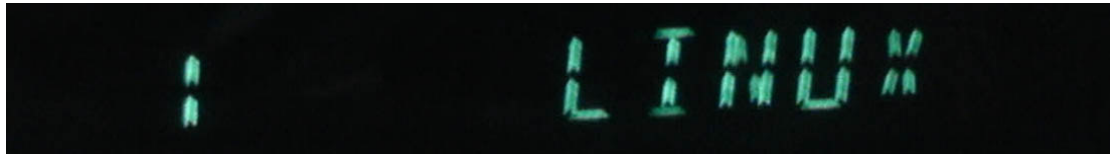


<http://forums.iranrks2.com/showthread.php?t=74501&p=359382#post359382>

1、Flash Update

How to force update the s/w when STB can not startup.

- 1.Download the latest s/w from forum.extract the file and get the xxx.bin
- 2.Insert a usb stick on PC and copy the file to it.Make a dir named RomUpdate rename xxx.bin to RomUpdate.bin and move it to RomUpdate folder.insert usb stick to STB.
- 3.Press Fontpanel Powerkey when startup receiver,the fontpanel will display as the picture 1



Picture 1

- 2.Press fontpanel ch+/ch- button switch the fontpanel display to picture 2.



Picture 2

- 3.Press Fontpanel OK button it will automatic startup and download file from usb stick..
- If after download receiver still can not bootup please use 2.NAND Flash Programming.

2、NAND Flash Programming

1. Setup a local network,with server computer ip 192.168.0.5

Get the factory full flash file from forum and extract it to your server computer disk D:[make sure the folder is D:\tftpd] then setup the tftp tool according step 2.

2. Tftpd.exe Setting

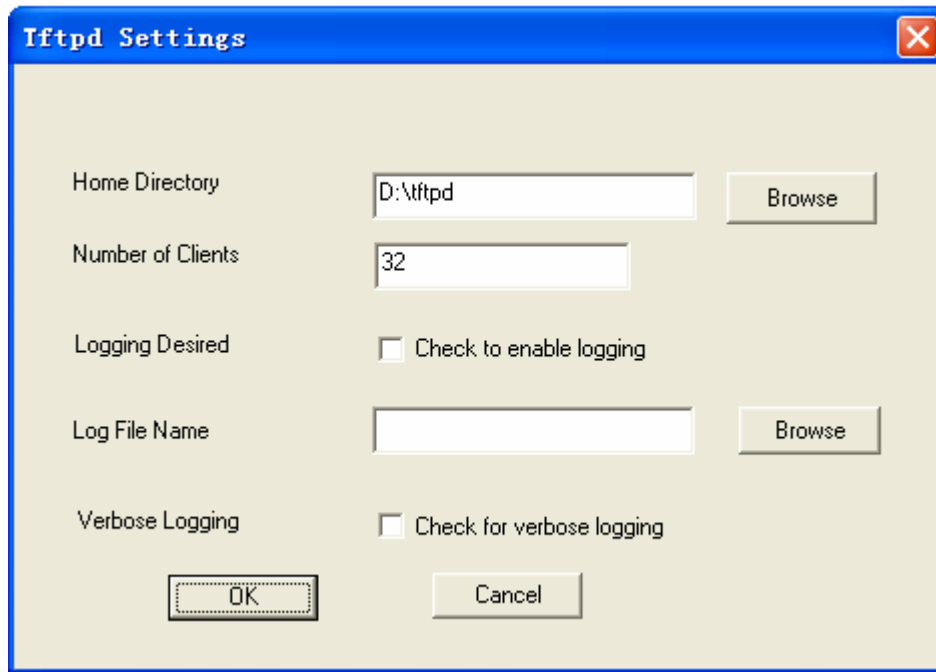
- 1) Open the tftpd.exe.

A) Click Tftpd->Configure

B) Click the "Browse" button, select the "tftpd" folder.

Note: The path of the "tftpd" folder can not be too long.

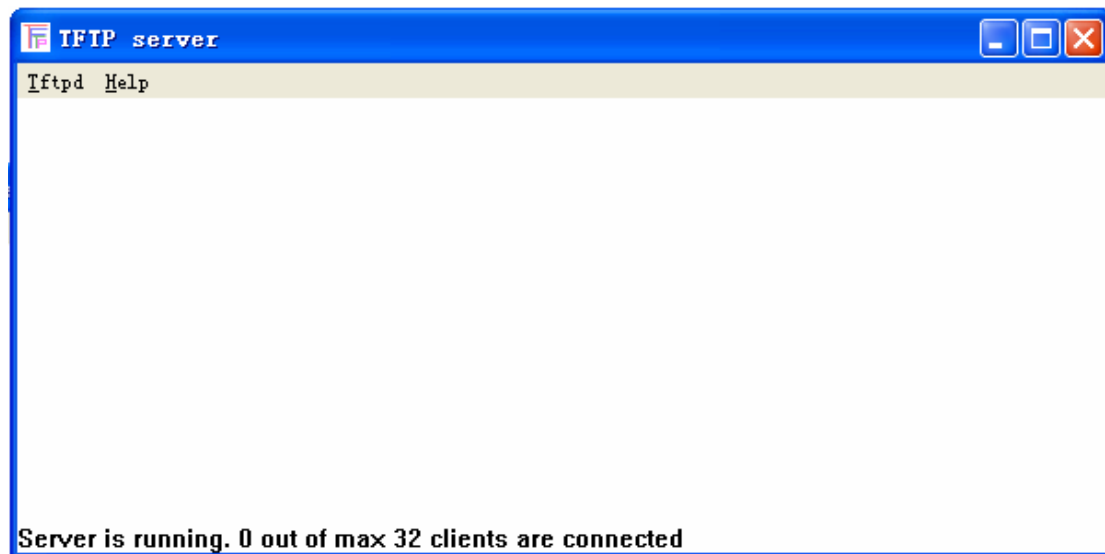
C) Input the number same like the picture displayed "Number of Clients" field .



D) Click the "OK" button , then back to the main interface as follow picture:



2) Click "Tftpd->Start" ,



3) Now, you finish the setting of the "tftpd.exe". During the following progress, you need not to close the tool until you finish the programming of all the STB.

3.How to update the STB.

1.Connect internet cable to STB[make sure both STB and server pc are in same local network]Press Fontpanel Powerkey when startup receiver,the fontpanel will display as the picture 1.



Picture 1

4.Press fontpanel ch+/ch- button switch the fontpanel display to picture 2.



Picture 2

5.Press Fontpanel OK button it will automatic startup get data from server pc and update.

When update the STB will display on fontpanel like step below:

```
"      DHCP      ",
"  SET SERVER   ",
"  SET LOADADDR ",
"   TFTP UBOOT ",
"   ERASE UBOOT ",
"   WRITE UBOOT ",
"   TFTP KERNEL ",
```

```

" ERASE KERNEL ",
" WRITE KERNEL ",
"   TFTP ROOT   ",
"  ERASE ROOT   ",
"  WRITE ROOT   ",
"  TFTP APPFS   ",
"  ERASE APPFS  ",
"  WRITE APPFS  ",
"  ERASE DATA  ",
"  TFTP DATA   ",
"  WRITE DATA  ",
"  ERASE USER   ",
"  TFTP USER    ",
"  WRITE USER   ",
"  ERASE DIVX   ",
"    TFTP K1    ",
"    ERASE K1   ",
"    WRITE K1   ",
"    TFTP R1    ",
"    ERASE R1   ",
"    WRITE R1   ",
"  TFTP ANDR_K  ",
" ERASE ANDR_K ",
" WRITE ANDR_K ",
"  TFTP ANDR_R  ",
" ERASE ANDR_R ",
" WRITE ANDR_R ",
"  TFTP ANDR_A  ",
" ERASE ANDR_A ",
" WRITE ANDR_A ",
" ERASE ANDR_D ",
" ERASE ANDR_P ",
"    RESET     ",

```

After finish STB will automatic startup the linux system.