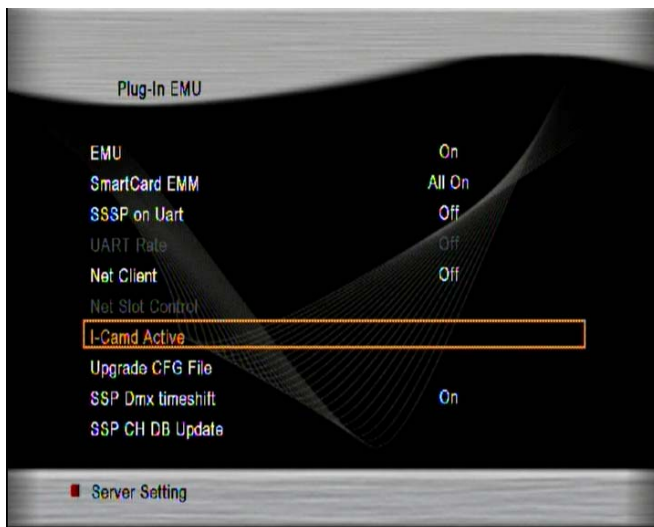


How to Activate for Our Internet Server

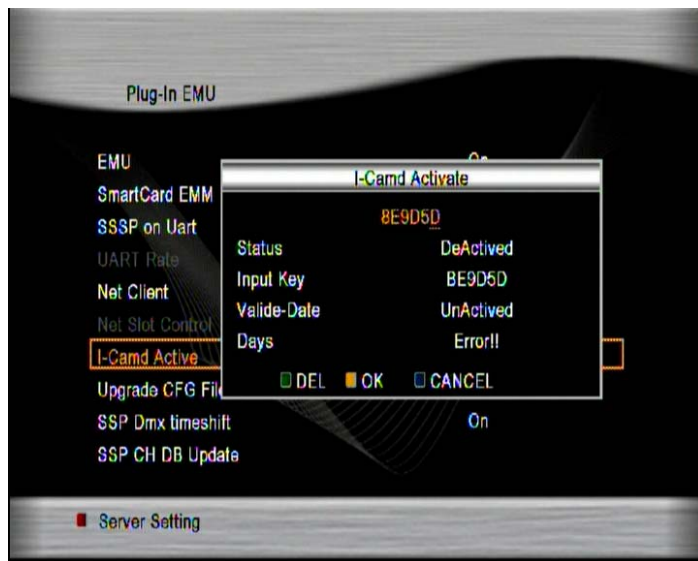
1. Please connection network and check IP address and make sure it's connected to internet
2. Press Menu button and go to CAS – Plug In EMU



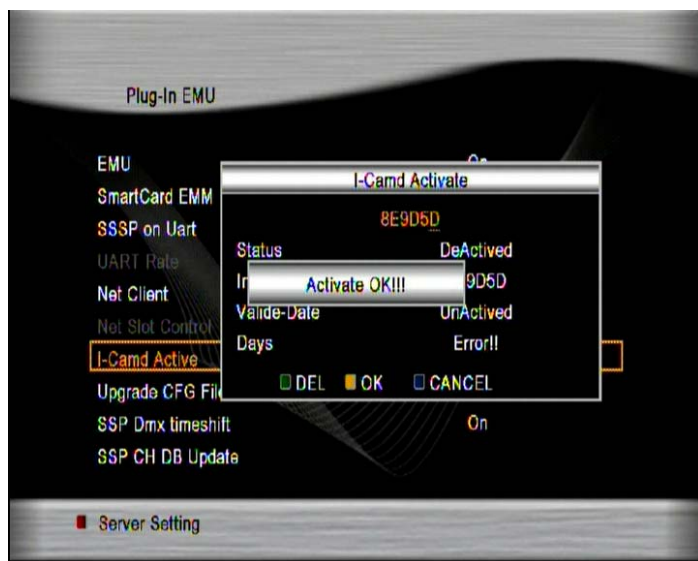
3. Please go to I-Camd Active and Press OK button



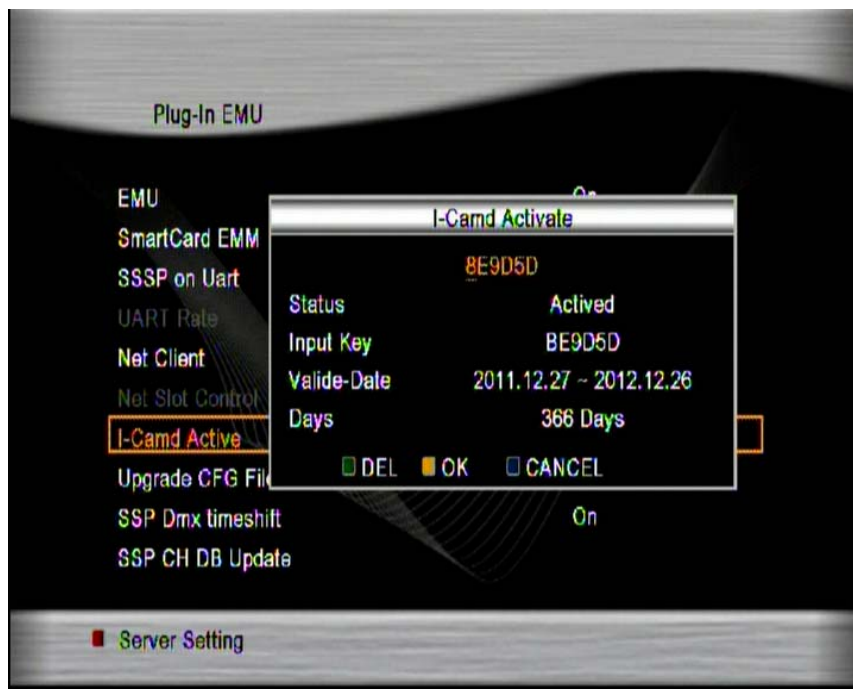
4. Please Press same as Input Key which you can see from your box (ex. If you Activate code is BE89C6 then Press two times 1 for "B", two time 2 for "E", one time 8 for "8", one time 9 for "9", three times 1 for "C" and one time 6 for "6"



5. After if you put collect then press Yellow button then you can see like below



6. Now you can see how long you can enjoy with our server like below



7. Also you can check if you press blue button from normal status

Which you watching the channel



*Server Index #0 for our server