

The method of loading server info by USB:

1. Configure file name: **allshares.dat**



allshares.dat

2. The content of configuration

N: stand for newcamd

C: stand for cccam

3. The details

The information of newcamd

The max of the server info added is 4

For example: if you have one below newcamd account

IP Address: 192.168.3.45

Port number: 12000-12009

User name: aaa

Password: bbb

Des key: 0102030405060708091011121314

So, you can write down the serial number as below

N: IP address port1 port2 username password

That is

N: 192.168.3.45 12000 12009 aaa bbb 0102030405060708091011121314

NOTE: every item should be separated by space

The information of cccam

The max of the cccam info added is 4

For example: if you have one below cccam account

IP address: www.google.com

Port number: 12000

User name: aaa

Password: bbb

So, you can write down the serial number as below

C: IP address port number user name password

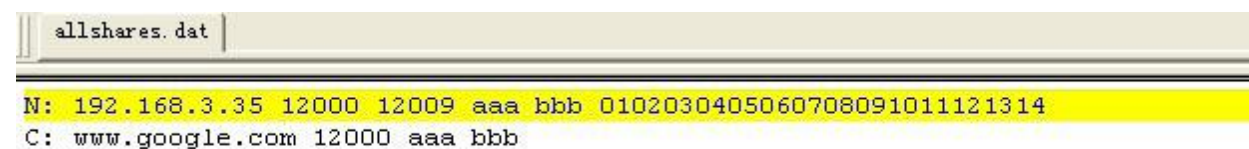
That is

C: www.google.com 12000 aaa bbb

NOTE: every item should be separated by space

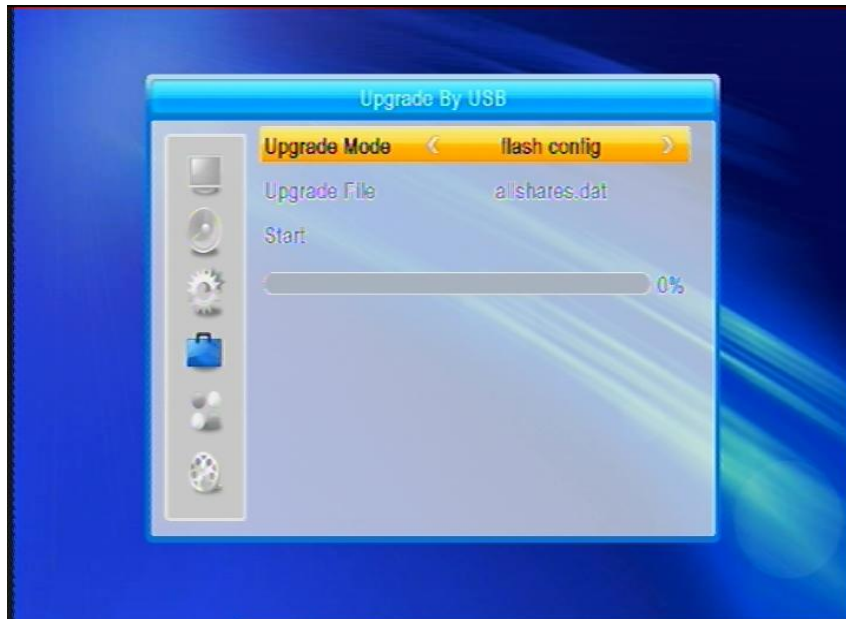
Please see below picture:

Write down the info and resave to allshares.dat

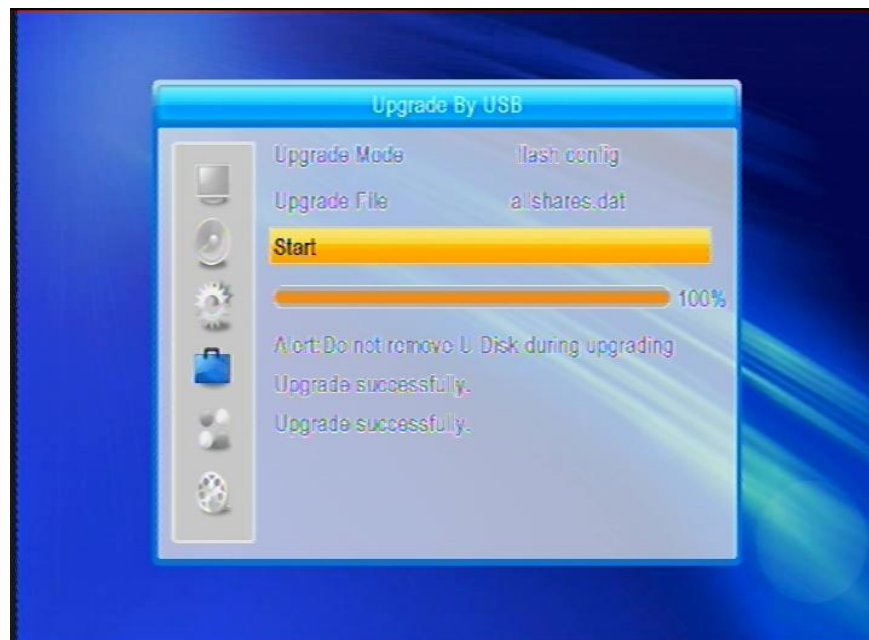


```
allshares.dat  
N: 192.168.3.35 12000 12009 aaa bbb 0102030405060708091011121314  
C: www.google.com 12000 aaa bbb
```

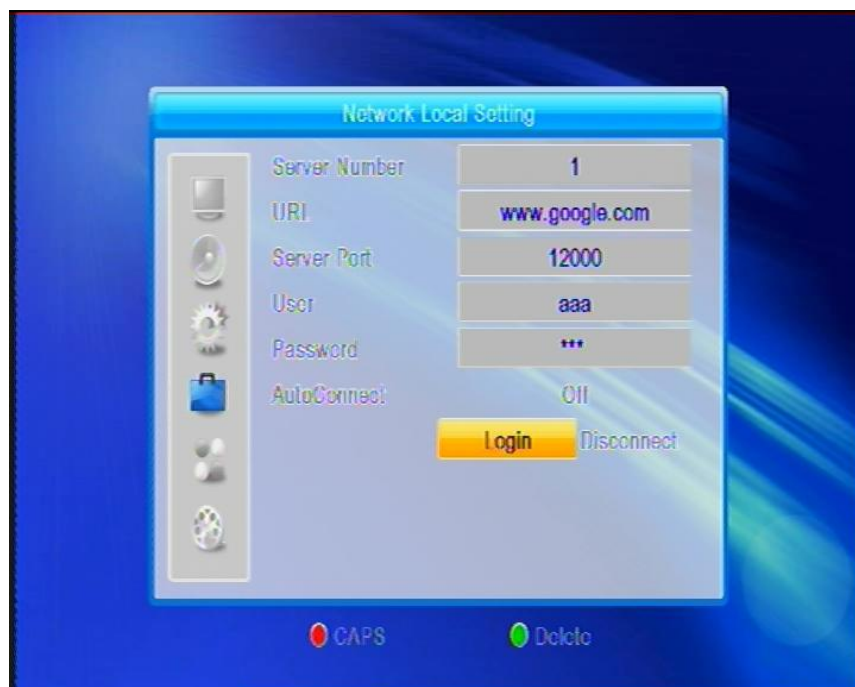
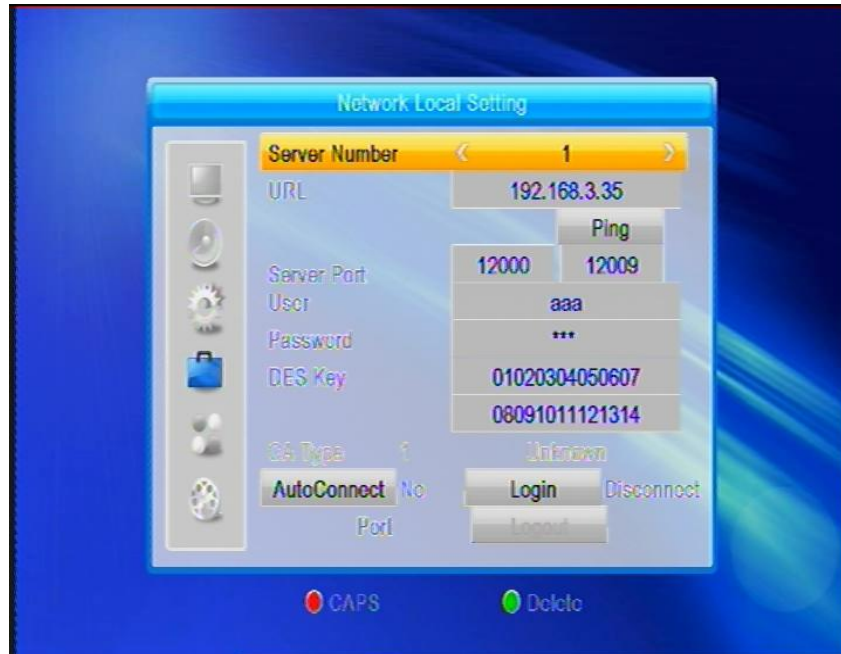
- ✦ Put this file in your USB and insert to box
- ✦ Go to the menu upgrade by USB
- ✦ Change the upgrade mode to flash config



- ✦ Then, press start for loading



✚ You could check the server info and the cccam in the local network setting menu



Edited By TUESTO.SAT

Special Thanks To FREESAT Group

Copyright © 2010-2011 Freesat. All rights reserved