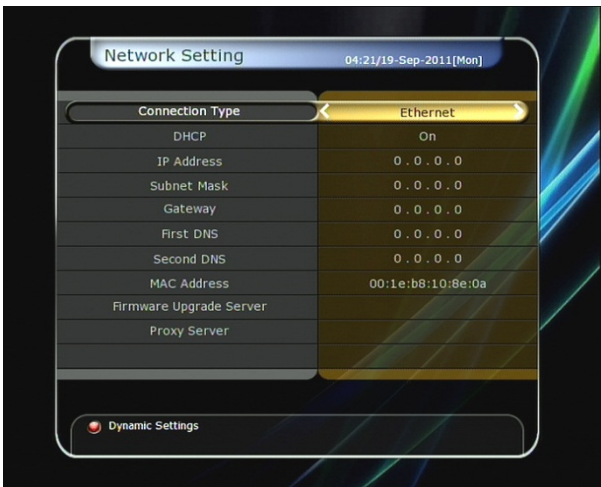


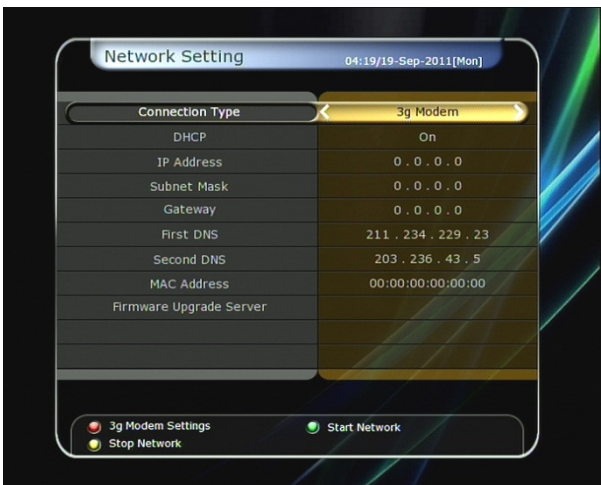
How To Use 3G Modem

Before running 3G Modem function, factory default mode should be run.

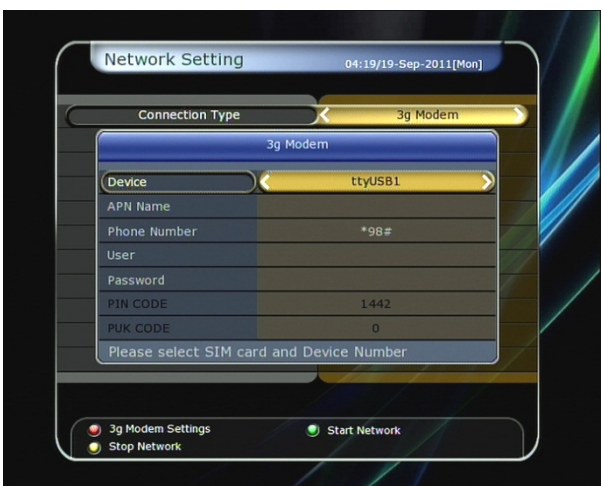
1. Go to Network Setting



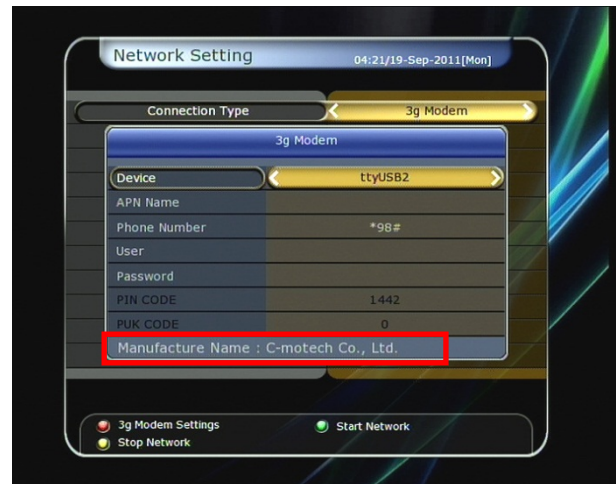
2. Choose Connection Type as 3G Modem



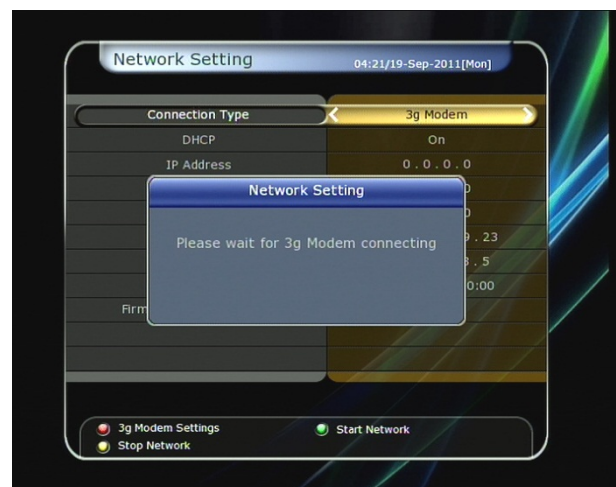
3. Press Red button for modem setting



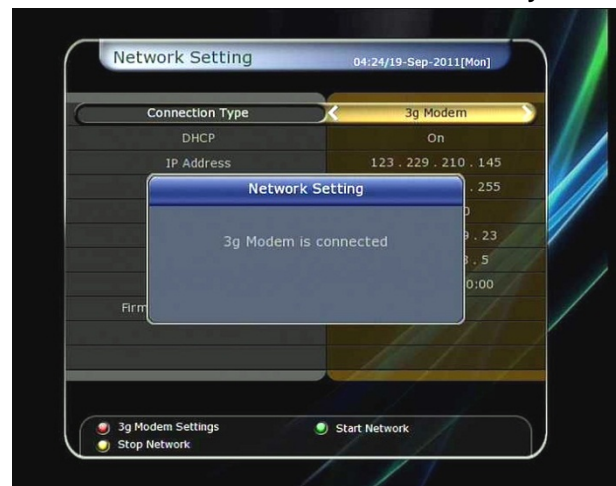
4. If the Setting is correct you will see the product name on the bottom line.



5. Press Green button to start network.



6. 3G Modem is connected successfully.



** Remark

- 1) APN, user name/password should be correct otherwise can not be connected.
(If disconnection message keeps showing, please check the APN, user name/password)
- 2) Recommend to use rear USB port for 3G Modem
- 3) Not recommend to use another memory stick on the same time
- 4) 10 sec time is needed for hotplug

** Configuration

- 1) ttyUSB0~4 : Device Port for 3G modem
Most brands of 3G modems are using ttyUSB0.
ZTE and D-LINK are using ttyUSB2.
- 2) APN Name : Access Point Name
- 3) User Name / Password : Press the Name and PW
- 4) PIN Code : 4 numbers PIN code
- 5) PUK Code : 8 numbers PUK code