

## INSTALLING ENIGMA IN XDSR400+ & 380HD

Download the Enigma pack from [www.satlog.co.cc](http://www.satlog.co.cc) and Extract it in a Folder

Now open the folder you will see **"Plugin"** **"Create Mini"** and Enigma Image file with name **XDSR400HD+ 380HD GIT-3295 PKT-1354.tar.gz**



plugin



CreateMini.exe



XDSR400HD+\_GIT-3295\_PKT-1354.tar.gz

Copy the plugin folder to USB and update it as usual

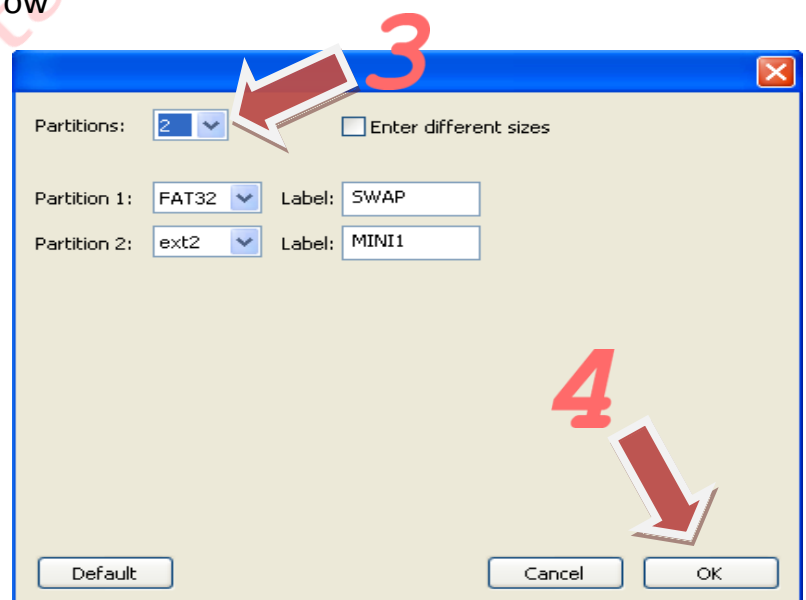
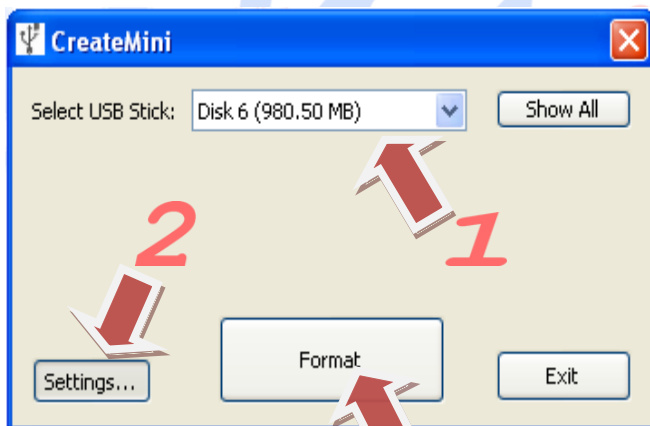
(Connect the USB to Receiver with plugin folder inside and wait for pop-up and then press Red key to Download, after Download success Receiver will reboot)

**Make sure your Receiver has the Latest version of Xcruiser software**

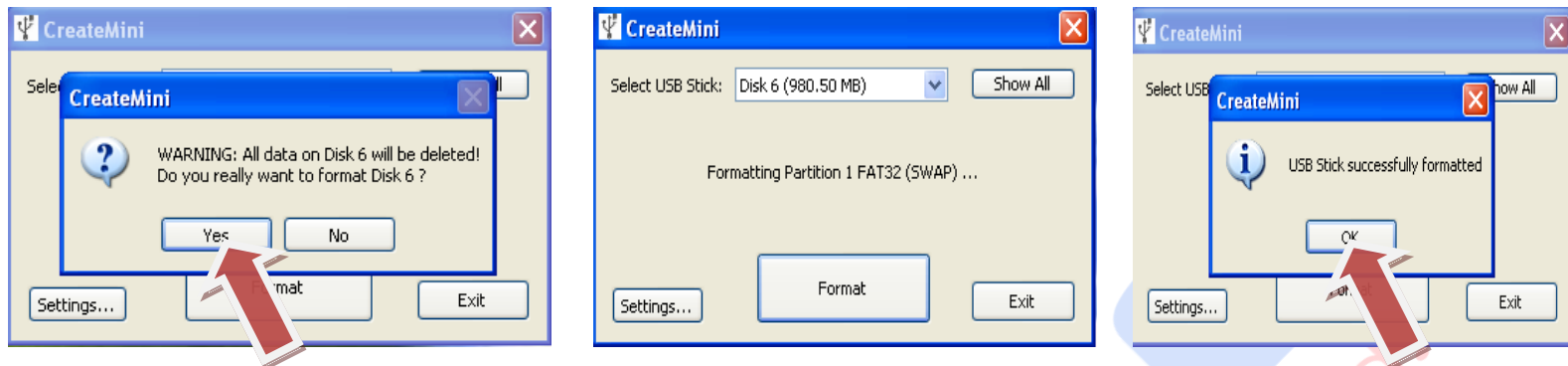
**Otherwise this Plugin will not Work properly!!!**

Now connect a USB to Computer with At least 1GB free space and open

**CreateMini.exe** and Select the USB Storage and then Click on Settings and make the configuration as per the image below

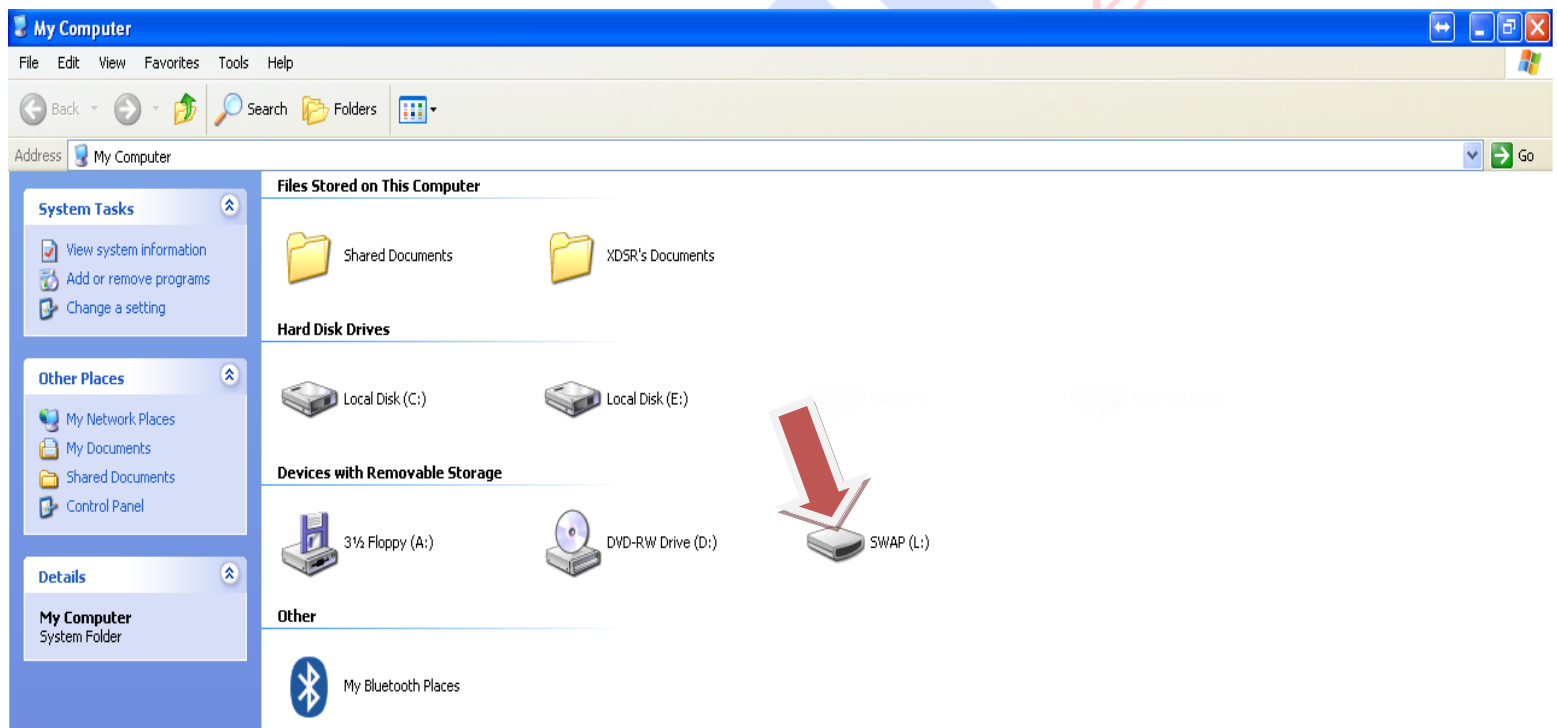


After clicking on Format you will see pop-up, warning of Deleting all Data from USB, click Yes to Continue



Now Formatting and Creating a Partitions has Completed, Press OK and Close it

Now Open MY Computer there you can see Removable Disk Name **SWAP**



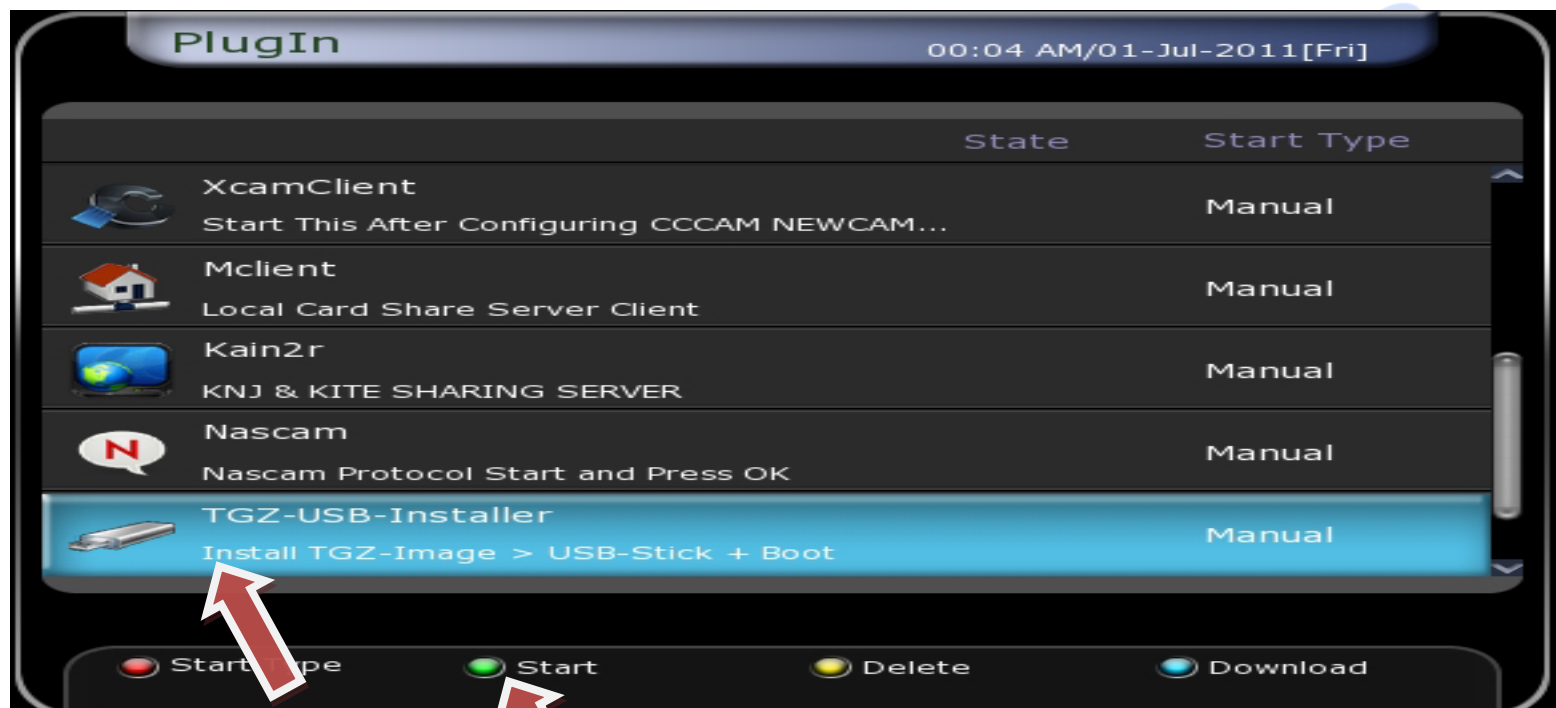
Transfer the **XDSR400HD+\_380HD\_GIT-3295\_PKT-1354.tar.gz** Image file in **SWAP** Disk and then Connect This USB to Receiver Front Panel USB port

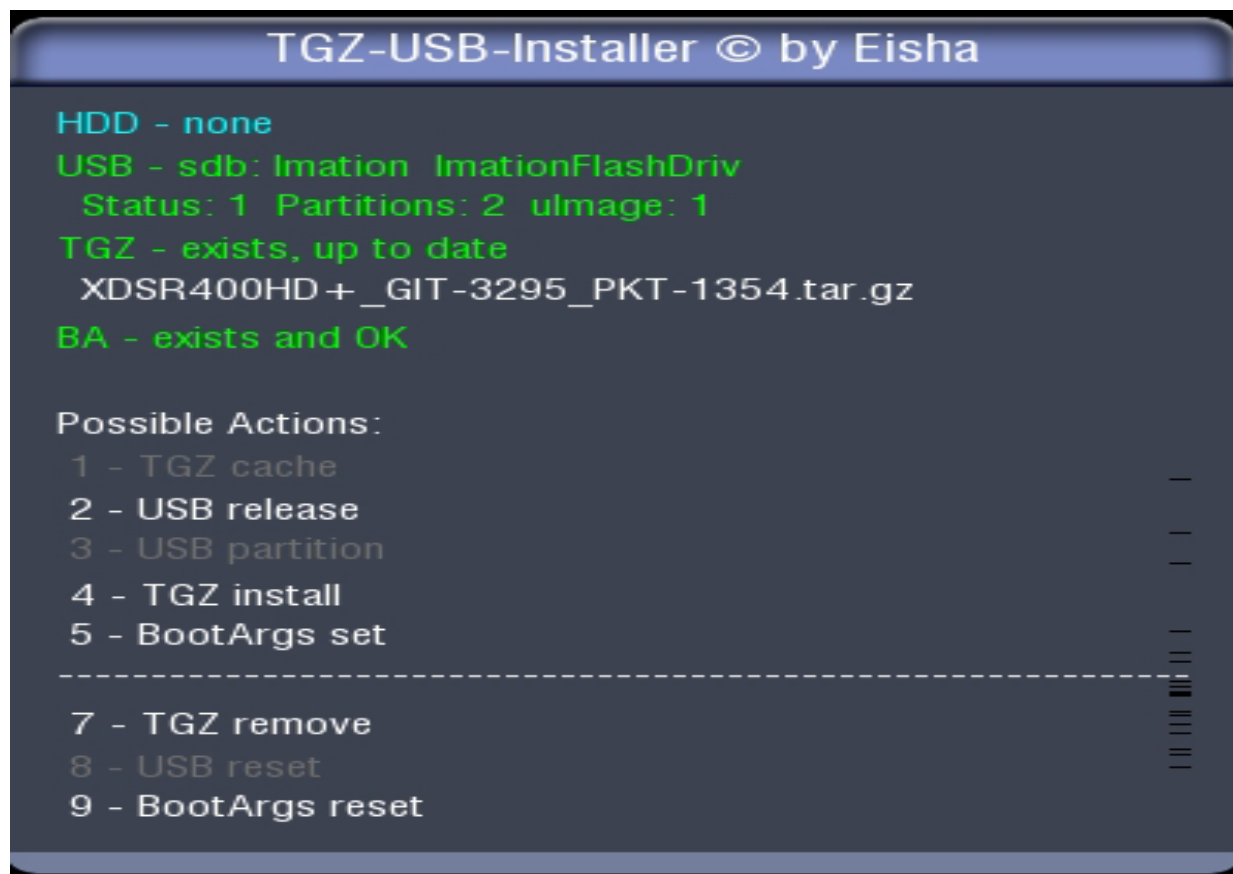
**Note:** - For XDSR380HD Connect the ENIGMA USB with USB-HUB and do not connect the other USB Storage, otherwise Receiver will not Start the Enigma!!!  
Once the receiver start with Enigma Image, you can Connect the Other USB Storage to play or Record



Now Turn ON the receiver and go to

**Menu=> Utilities=>Plugin =>TGZ-USB-Installer** and press GREEN key to start





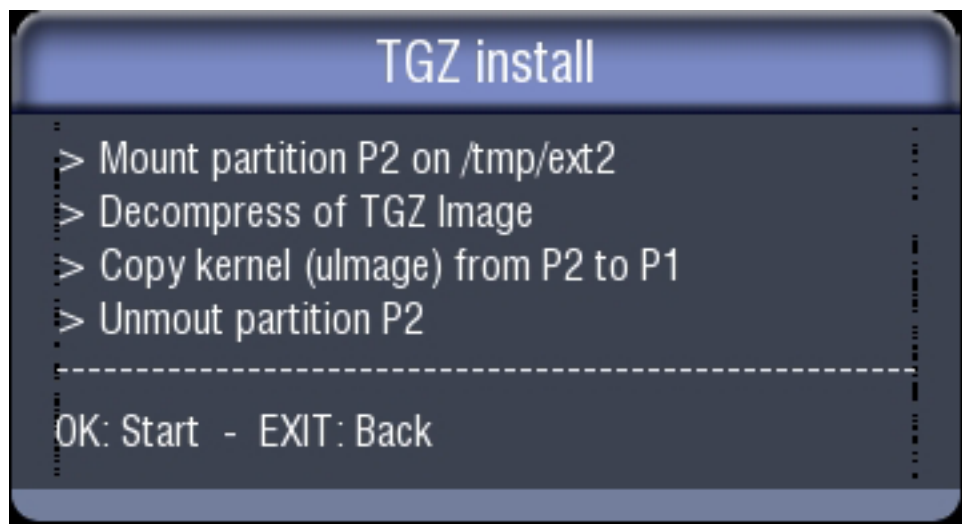
Now Press the Key number 5 from Remote Control to set Boot Args



Press OK to Continue



Now Press KEY number 4 to install the Image

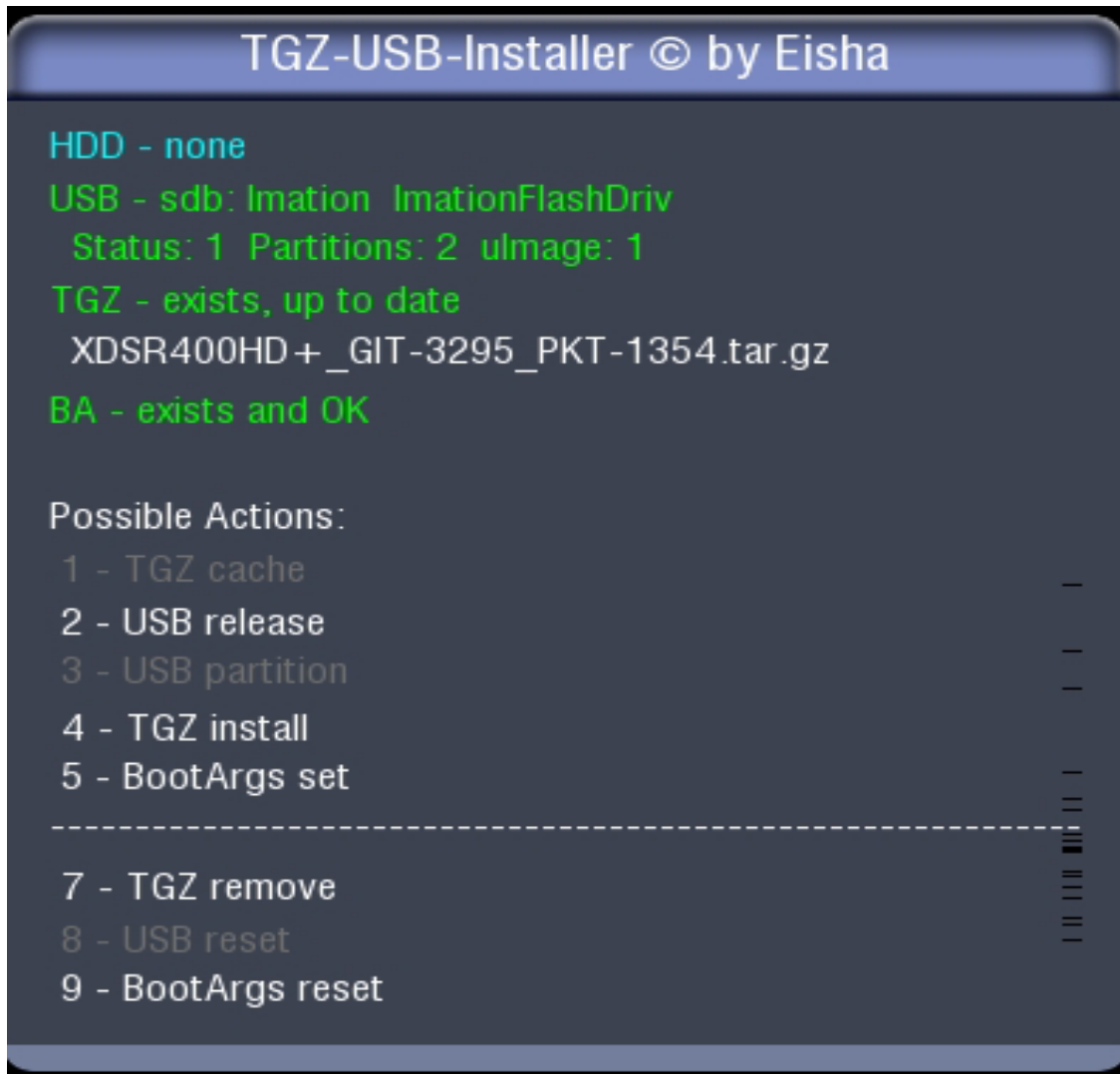


Press OK key to Start Image Extraction and wait till the process Complete



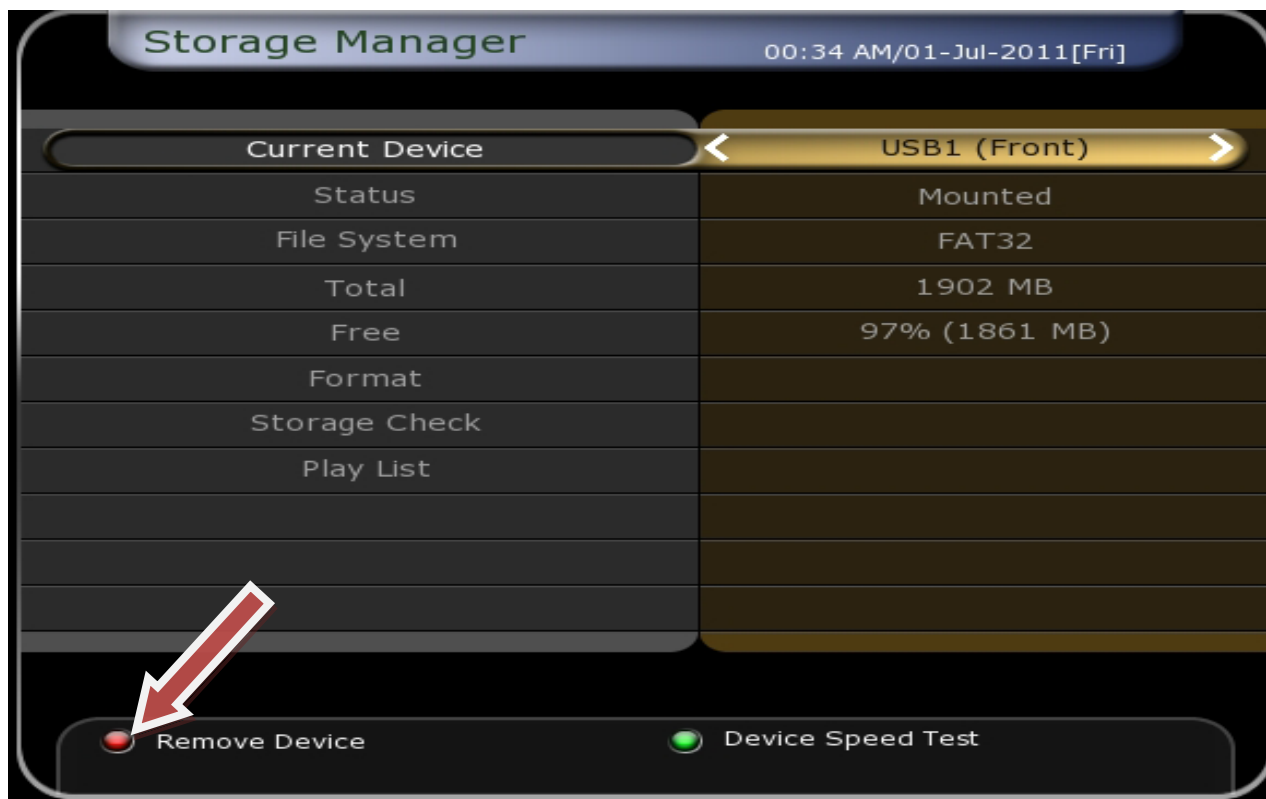
Press OK key to continue it will get back to TGZ menu





Press Key Number 2 to Release the USB from receiver





Now Restart the Receiver from Power Switch

Enigma will start automatically from USB!

If you want to Use Xcruiser Software then Remove the USB  
and Restart the Receiver, it will boot from Flash Memory with Xcruiser Software

**To Remove Boot ARGS go to Menu=>Utilities=>Plugin=>TGZ INSTALLER start  
with Green key and Press Key number 9 from remote and Press OK and Restart**



[Xcruiserxdsr@gmail.com](mailto:Xcruiserxdsr@gmail.com)

[Xcruiserxdsr@yahoo.com](mailto:Xcruiserxdsr@yahoo.com)

[Support@xcruiser.net](mailto:Support@xcruiser.net)

[www.lucksat.net](http://www.lucksat.net) Xcruiser Forums English Version

[www.lucksat.org](http://www.lucksat.org) Xcruiser Forum Persian Version

[www.satlog.co.cc](http://www.satlog.co.cc) Exclusive Software for Xcruiser