

[WWW.SAT2HD.COM](http://WWW.SAT2HD.COM)

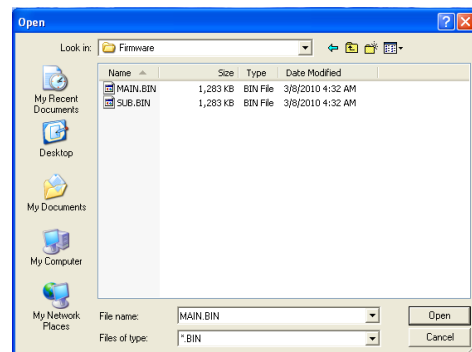
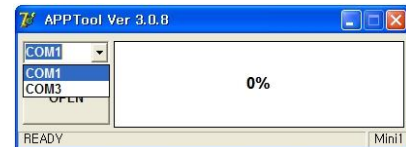
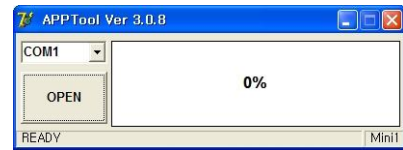
**Mini1**

## **Firmware Upgrade Guide**

## Firmware Upgrade by Serial Cable

You can upgrade firmware of your receiver by serial cable.

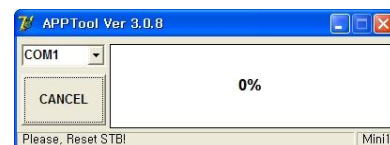
1. Connect receiver to PC with a serial cable.
2. Run the application software “**APPTOOL.exe**”.
3. Select the port connected to the STB.
4. Select the firmware file which you will upgrade.



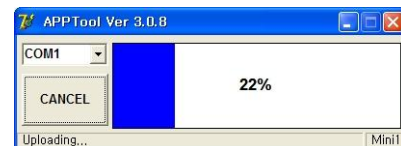
5. The message box will appear.



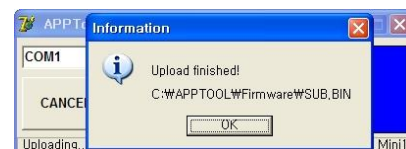
6. Reboot the receiver.



Then the firmware upgrade will be started.



7. Upon completion of the firmware upgrade, a message will be displayed.



## Auto Firmware Upgrade by USB

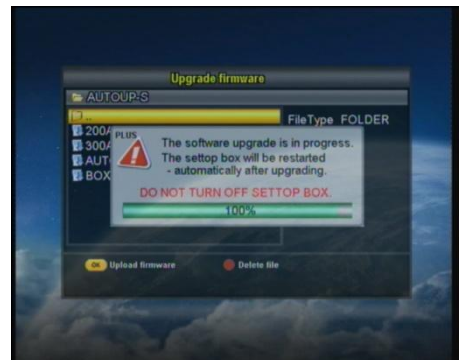
You can automatically upgrade firmware of your receiver by USB.

**Note:** If the current version of the firmware is the same as the version of the firmware file for upgrade, the firmware upgrade will be skipped.

### 1.1 First firmware upgrade

When you first upgrade firmware of your receiver after purchasing it, you can upgrade it automatically by USB under the simple procedure as follows.

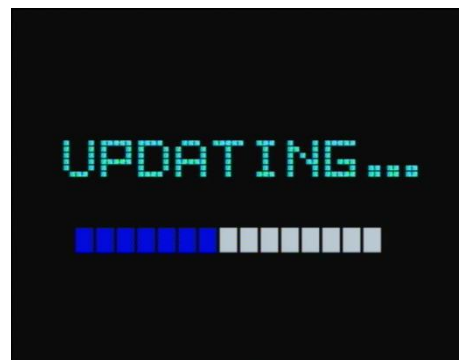
1. Locate the firmware “**AUTO.XXX**” file at “**\AUTOUP-S\AUTOUP.XXX**” in your USB.
2. Connect USB to the receiver and reboot the receiver.
3. When rebooting, the firmware upgrade will be started automatically.



### 1.2 Further firmware upgrade

When you want to upgrade firmware of your receiver after first firmware upgrade, you can also upgrade it automatically by USB as follows.

1. Locate the firmware “**AUTO.XXX**” file at “**\AUTOUP-S\AUTOUP.XXX**” in your USB.
2. Connect USB to the receiver and reboot the receiver.
3. When rebooting, the firmware upgrade will be started automatically.



4. Upon completion of the firmware upgrade, a message will be displayed.



## Auto Firmware Upgrade by USB with the other receiver

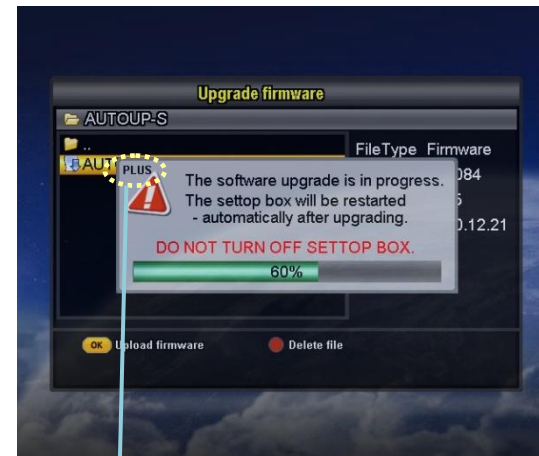
You can automatically upgrade Mini1 firmware by USB with the other receiver.

**Note:** If the current version of the system is the same as the version of the file for software upgrade, the software upgrade will not be processed. Instead, the message window informing “The version of firmware is same!” will appear at the bottom of the screen when you reboot.

### 1.1 firmware upgrade

1. Locate the firmware “**AUTO.XXX**” file at “**\AUToup-S\AUToup.XXX**” in your USB.
2. Connect **Mini1** to the other receiver.
3. Connect USB to the other receiver and reboot the other receiver.
4. When rebooting, the firmware upgrade will be started automatically.

4. Upon completion of the firmware upgrade, a message will be displayed.



**Note:** “PLUS” will be indicated in the message box when the firmware upgrade for **sub system** is in progress.

**WWW.SAT2HD.COM**