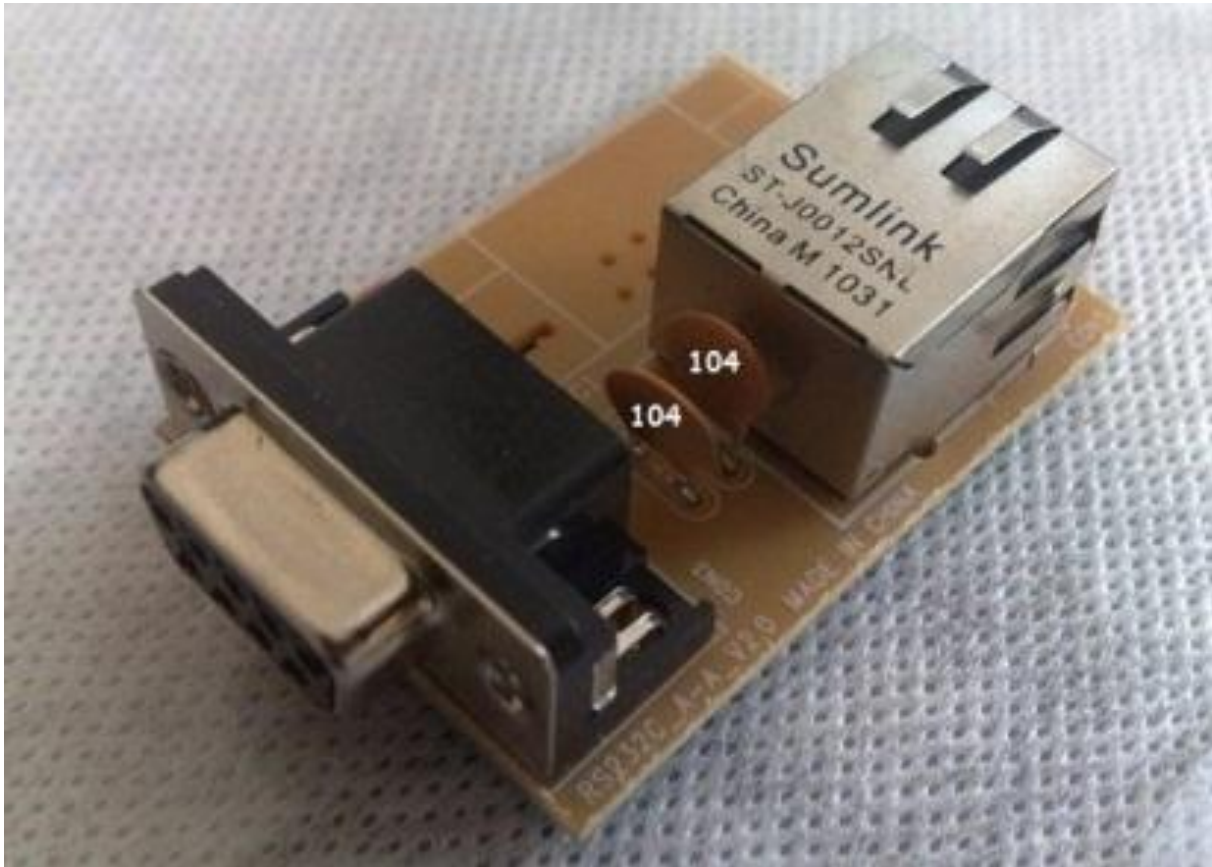


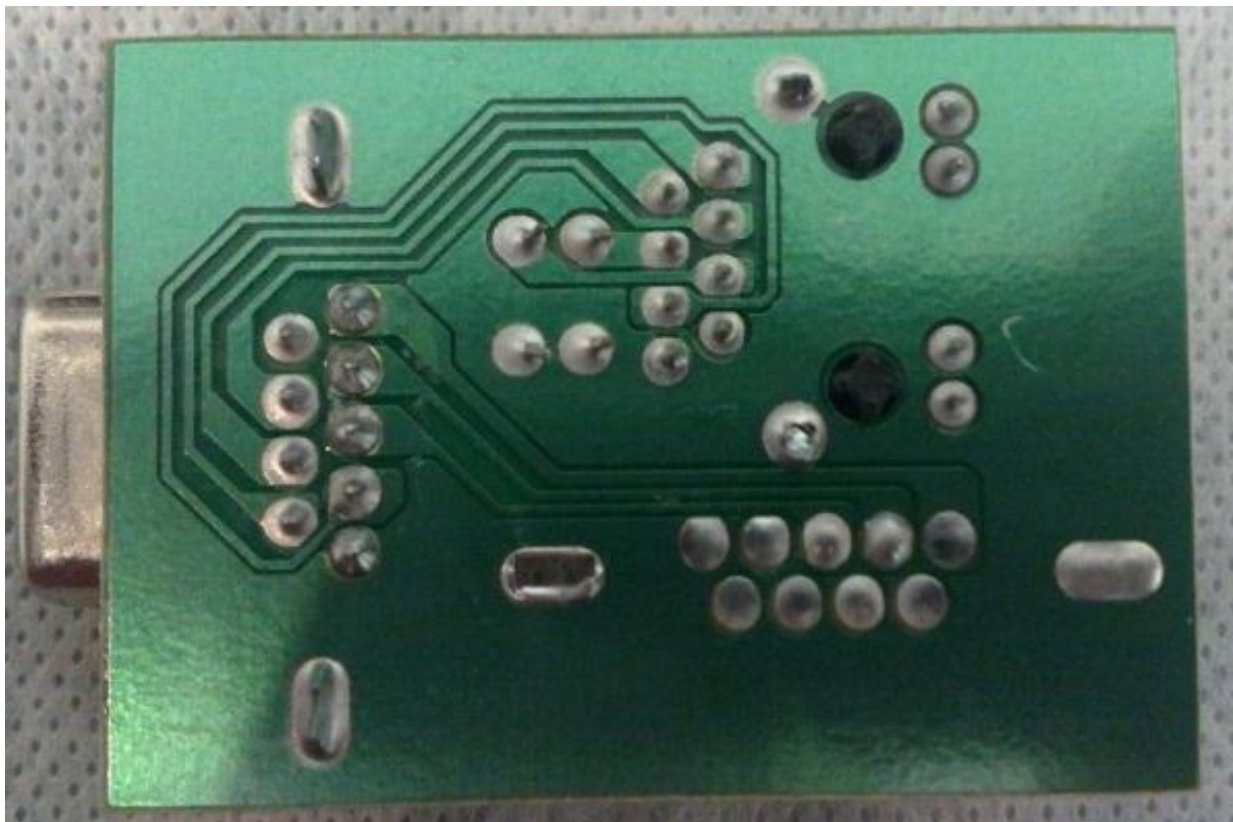
# RS232C\_A-A\_V2.0

SRT4902



RS232C to Ethernet (RJ-45 ) Convertor

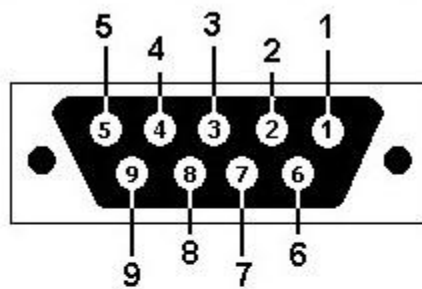




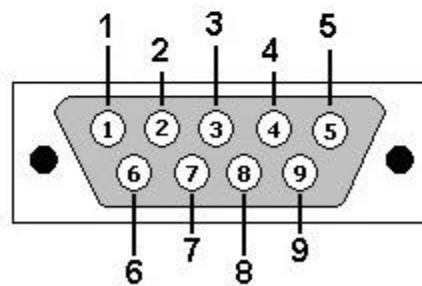


**DB9 Female**

---



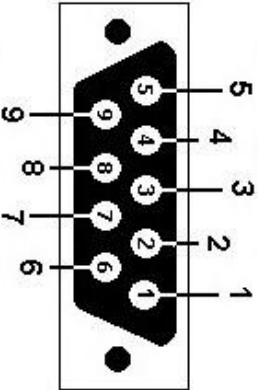
**DB9: View looking into female connector**



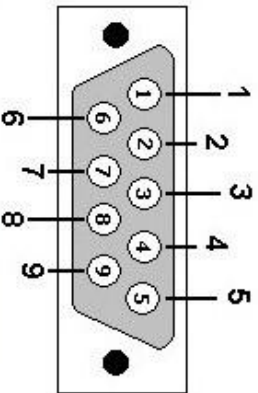
**DB9: View looking into male connector**

RS232 on DB9

Pin No.	Name	Dir	Notes/Description
1	DCD	IN	Data Carrier Detect. Raised by DCE when modem synchronized.
2	RD	IN	Receive Data (a.k.a RXD, Rx). Arriving data from DCE.
3	TD	OUT	Transmit Data (a.k.a TXD, Tx). Sending data from DTE.
4	DTR	OUT	Data Terminal Ready. Raised by DTE when powered on. In auto-answer mode raised only when RI arrives from DCE.
5	SGND	-	Ground
6	DSR	IN	Data Set Ready. Raised by DCE to indicate ready.
7	RTS	OUT	Request To Send. Raised by DTE when it wishes to send. Expects CTS from DCE.
8	CTS	IN	Clear To Send. Raised by DCE in response to RTS from DTE.
9	RI	IN	Ring Indicator. Set when incoming ring detected - used for auto-answer application. DTE raised DTR to answer.

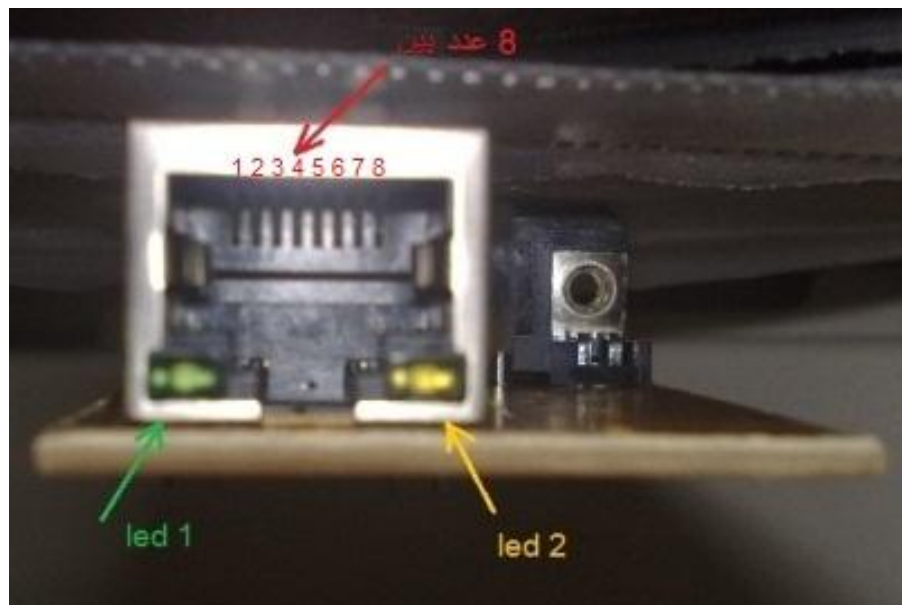


DB9: View looking into female connector



DB9: View looking into male connector





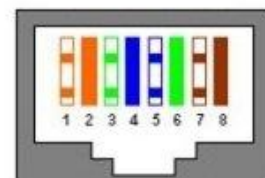
ANSI/TIA/EIA 568B

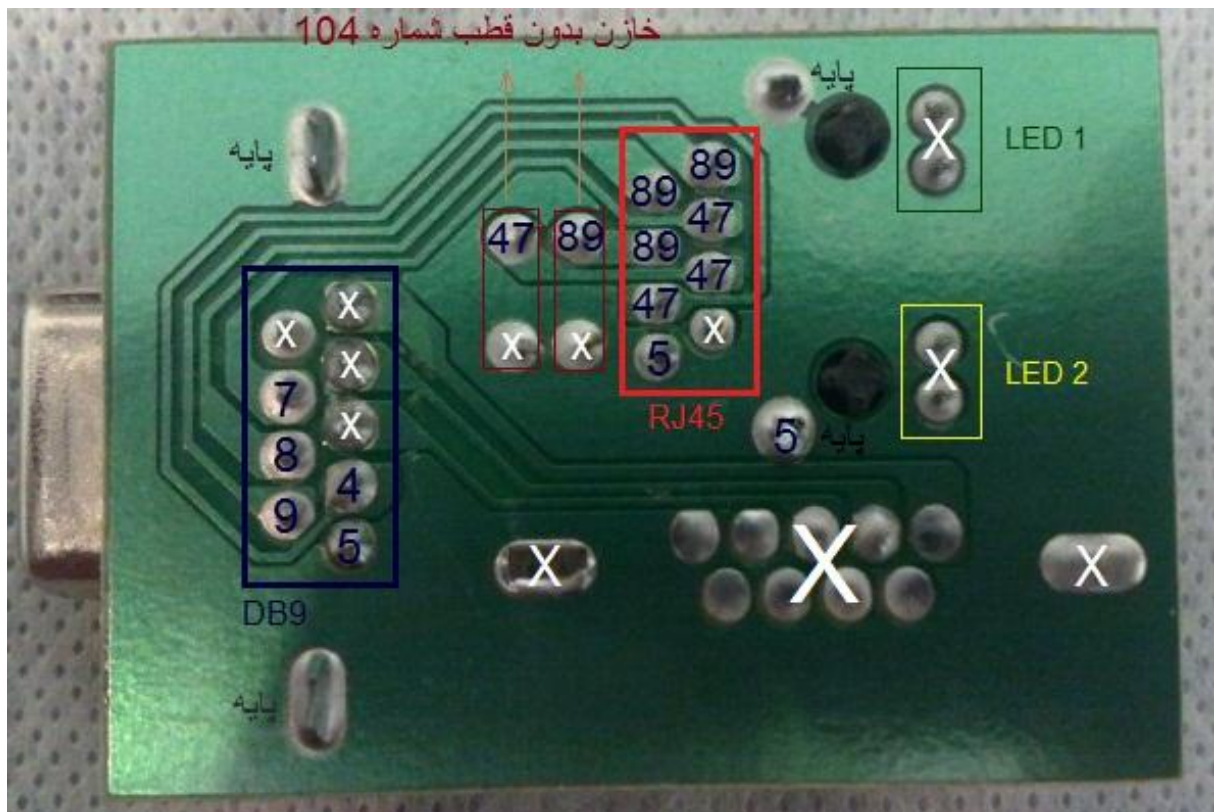
Pin	Color
1	white/orange
2	orange
3	white/green
4	blue
5	white/blue
6	green
7	white/brown
8	brown

RJ-45 Plug



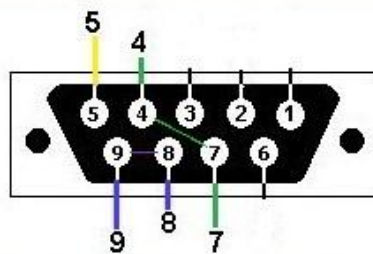
RJ-45 Jack





## RS232 on DB9

Pin No.	Name	Dir
5	SGND	-
4	DTR	OUT
7	RTS	OUT
8	CTS	IN
9	RI	IN



DB9: View looking into female connector



## قطعات مورد نیاز جهت ساخت تبدیل:

۱. یک عدد DB9 یا سریال پورت ۹ پین --- (Female)
۲. یک عدد RJ45 (Female) مدل sumlink st-j0012
۳. دو عدد خازن بدون قطب به شماره 104
۴. کیت و کابل



Copy right by A.G

2011/09/15

# SINGLE RJ45 CONNECTOR MODULE WITH INTEGRATED 10/100 BASE-TX MAGNETICS

## FEATURES

- 10/100 Base-TX RJ45 1x1 Tab-DOWN with LEDs 8-pin integrated magnetics connector
- Available with or without LEDs
- Suitable for CAT 5 & 6 Fast Ethernet Cable or better UTP
- Meets or exceeds IEEE 802.3 standard for 100Base-T
- 350  $\mu$ H minimum OCL with 8 mA bias current
- Minimum 1500 Vrms isolation per IEEE 802.3 requirement

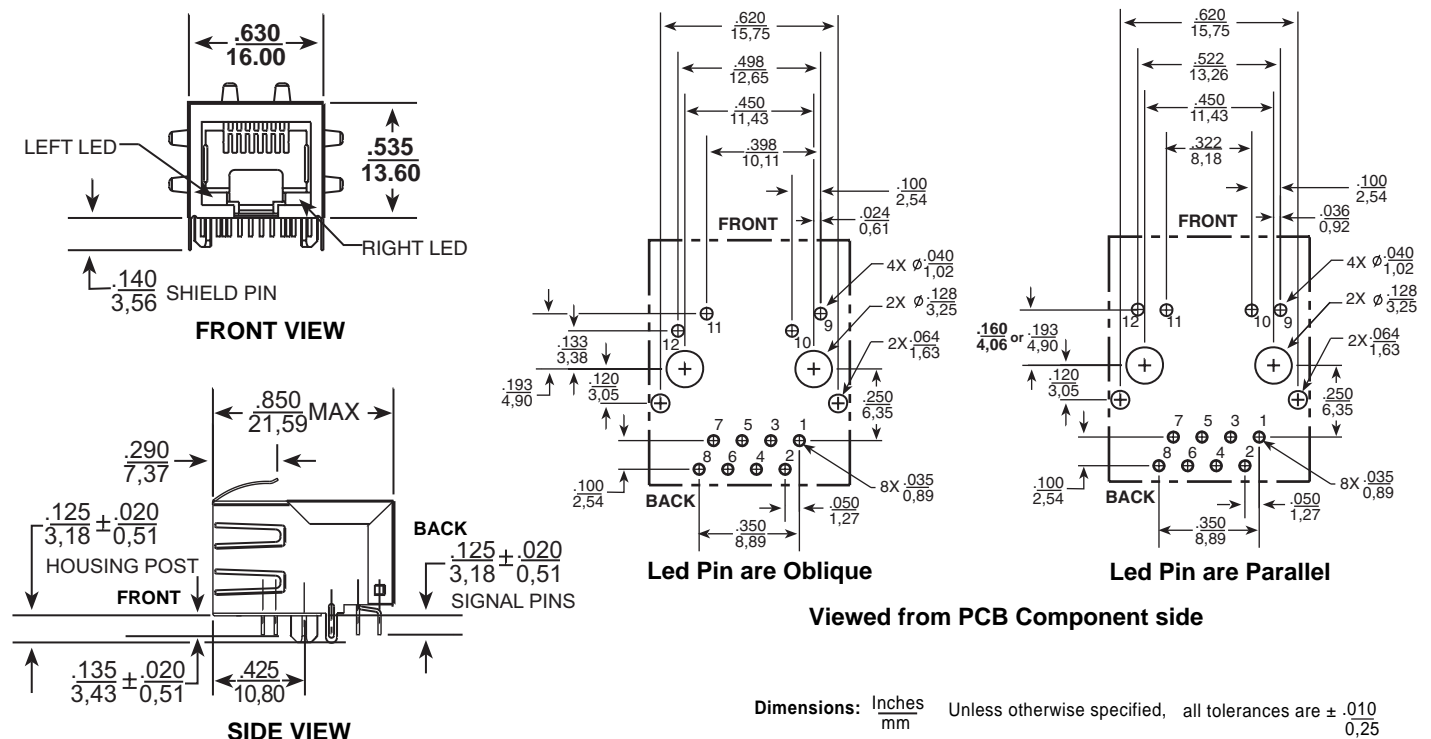


Electrical Specifications @ 25°C — Operating Temperature 0°C to +70°C

Part Number	Turns Ratios		EMI Fingers	LEDs (L/R)	Insertion Loss (dB TYP)	Return Loss (dB TYP) 100 $\Omega \pm 15 \Omega$					Crosstalk (dB TYP)			Common Mode Rejection (dB TYP)		Hipot (Vrms)
	TX	RX				1-65 MHz	1-10 MHz	10-30 MHz	30-60 MHz	60-80 MHz	1-30 MHz	30-60 MHz	60-100 MHz	1-50 MHz	50-150 MHz	
ST-J0005	1CT:1	1CT:1	YES	N/A	-1	-20	-16	-12	-10	-10	-40	-35	-30	-30	-20	1500
ST-J0006	1CT:1	1CT:1	YES	G/Y	-1	-20	-16	-12	-10	-10	-40	-35	-30	-30	-20	1500
ST-J0011	1CT:1	1CT:1	YES	N/A	-1	-20	-16	-12	-10	-10	-40	-35	-30	-30	-20	1500
ST-J0012	1CT:1	1CT:1	YES	G/Y	-1	-20	-16	-12	-10	-10	-40	-35	-30	-30	-20	1500
ST-J0013	1CT:1	1CT:1	YES	N/A	-1	-20	-16	-12	-10	-10	-40	-35	-30	-30	-20	1500
ST-J0017	1CT:1.414	1CT:1	YES	N/A	-1	-20	-16	-12	-10	-10	-40	-35	-30	-30	-20	1500
ST-J0018	1CT:1.414	1CT:1	YES	G/G	-1	-20	-16	-12	-10	-10	-40	-35	-30	-30	-20	1500
ST-J0023	1CT:2	1CT:1	YES	N/A	-1	-20	-16	-12	-10	-10	-40	-35	-30	-30	-20	1500
ST-J0024	1CT:2	1CT:1	YES	G/Y	-1	-20	-16	-12	-10	-10	-40	-35	-30	-30	-20	1500
ST-J0025	1CT:1	1CT:1	YES	N/A	-1	-20	-16	-12	-10	-10	-40	-35	-30	-30	-20	1500
ST-J0026	1CT:1	1CT:1	YES	G/Y	-1	-20	-16	-12	-10	-10	-40	-35	-30	-30	-20	1500
ST-J0033	1.25CT:1	1CT:1	YES	N/A	-1	-20	-16	-12	-10	-10	-40	-35	-30	-30	-20	1500
ST-J0036	1CT:1	1CT:1	YES	G/Y	-1	-20	-16	-12	-10	-10	-40	-35	-30	-30	-20	1500
ST-J0048	1CT:1	1CT:1	YES	G/G	-1	-20	-16	-12	-10	-10	-40	-35	-30	-30	-20	1500
ST-J0073	1CT:2.5	1CT:1	No	G/Y	-1	-20	-16	-12	-10	-10	-40	-35	-30	-30	-20	1500

**Note:** 1. For Led pin are parallel, add a "A" suffix a the end of the part number when ordering e.g. ST-J0012A  
2. For without EMI Fingers, add a "B" suffix a the end of the part number when ordering e.g. ST-J0025B

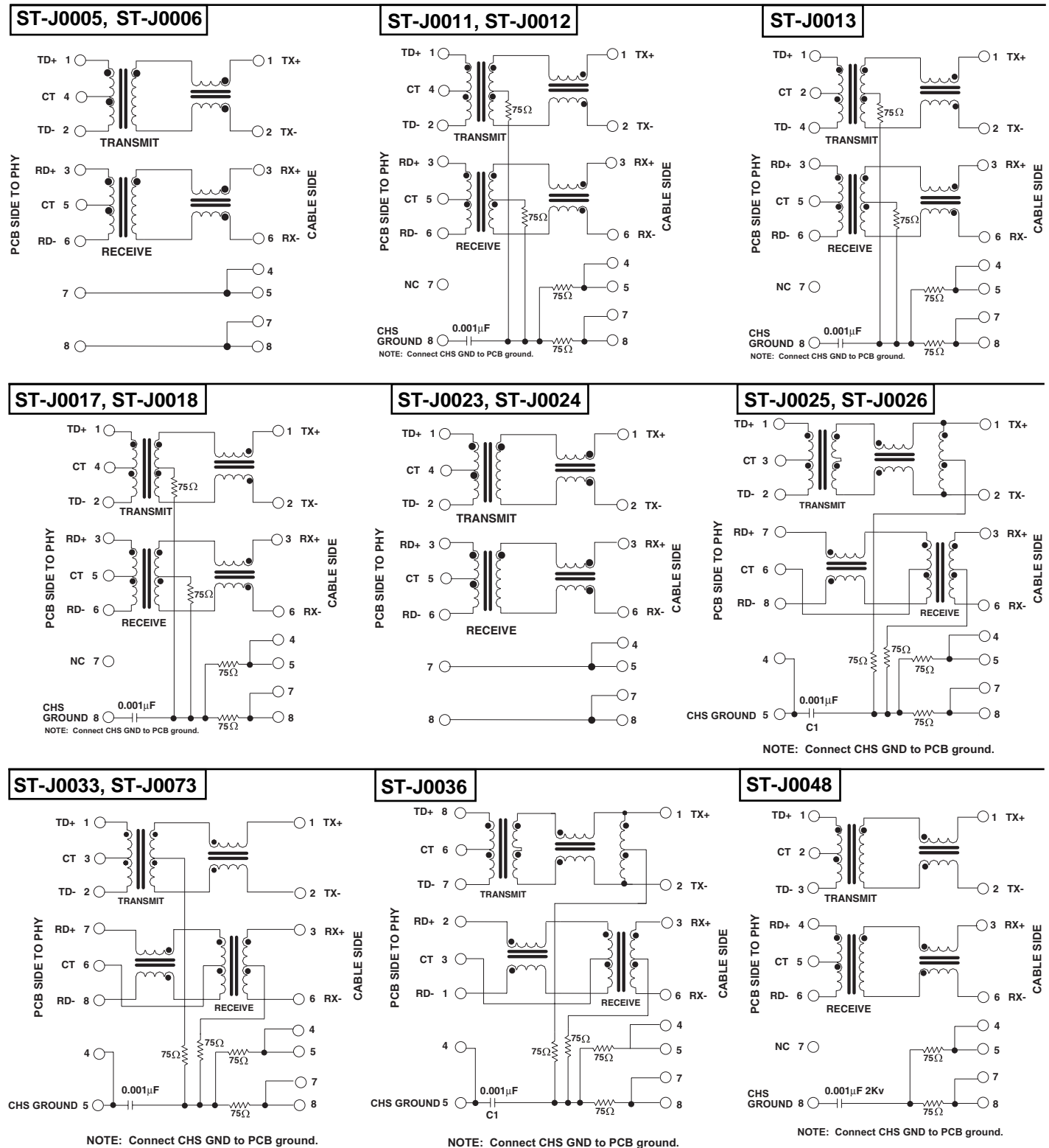
## Mechanicals





# SINGLE RJ45 CONNECTOR MODULE WITH INTEGRATED 10/100 BASE-TX MAGNETICS

## Schematics



## RJ45 Material Specification

1. Housing Material: Glass filled Polyester UL94V-0
2. Contact Material: Phosphor Bronze T=0.35mm
3. Plating : Contact Area-Selective Gold Palting  
Tail-150u" Tin-Lead Min Over 50u"
4. Shield Material: Brass

## LED Configuration

