

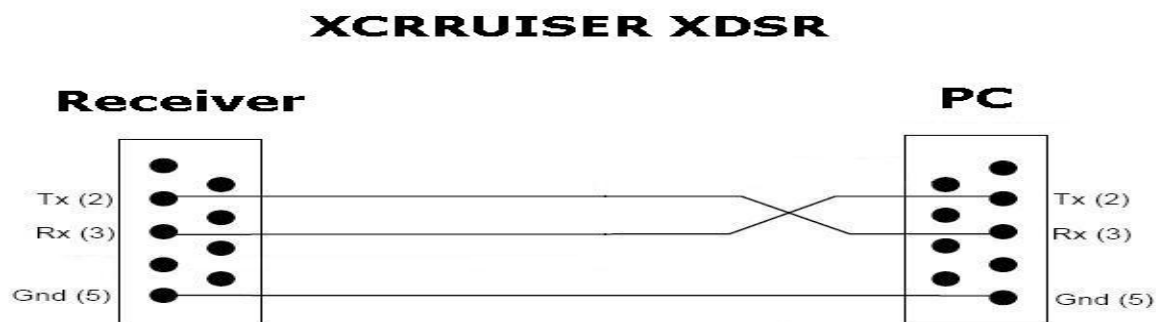
How to Update Software XDSR 240 VIA PC

To update software of xdsr240 you can use HyperTerminal Software default in your Windows XP if you don't know how to Use it then follow the guide

We need

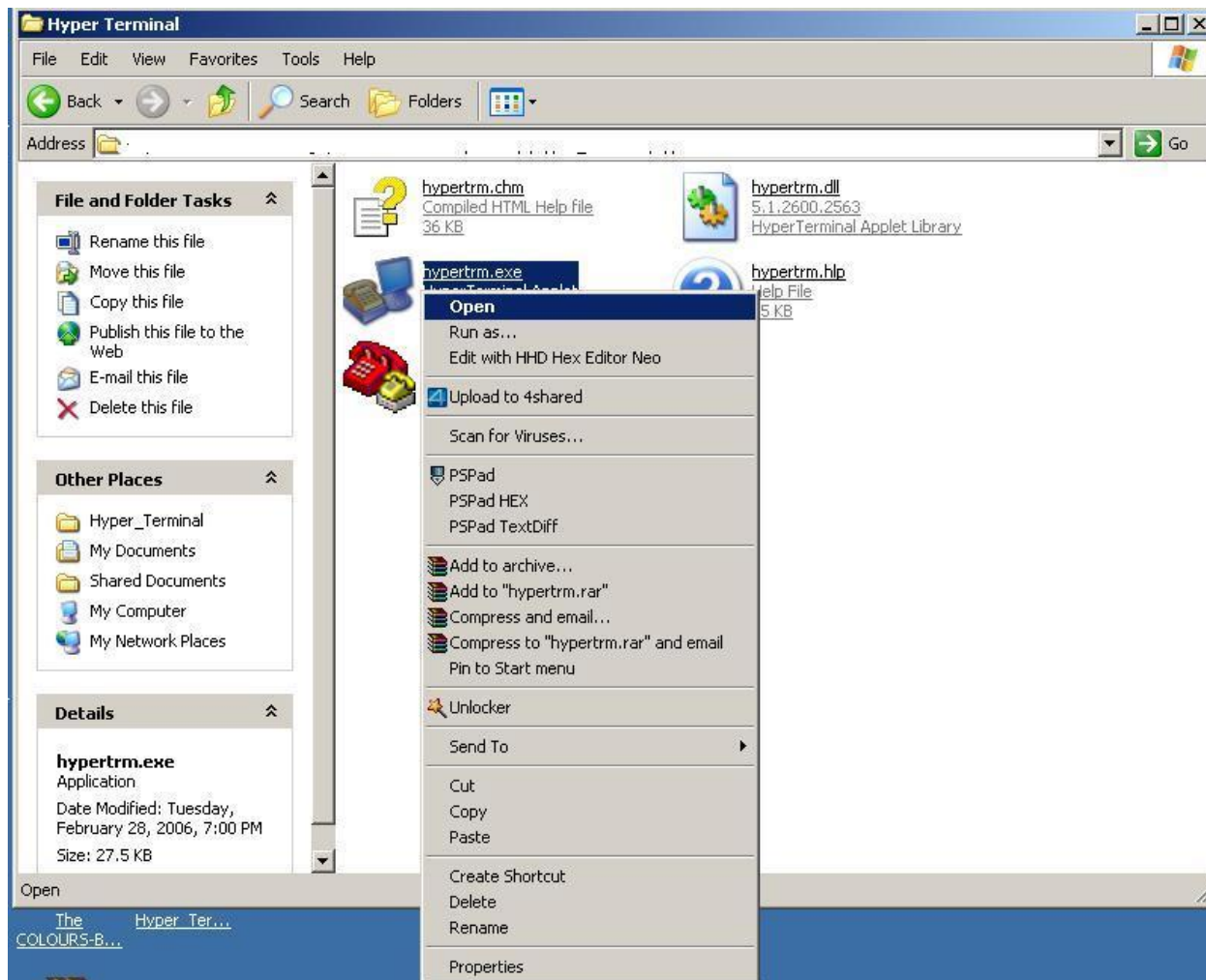
1. Computer with Serial Com port
2. Null modem Cable

If you don't have a Null modem cable you can make it by your Self



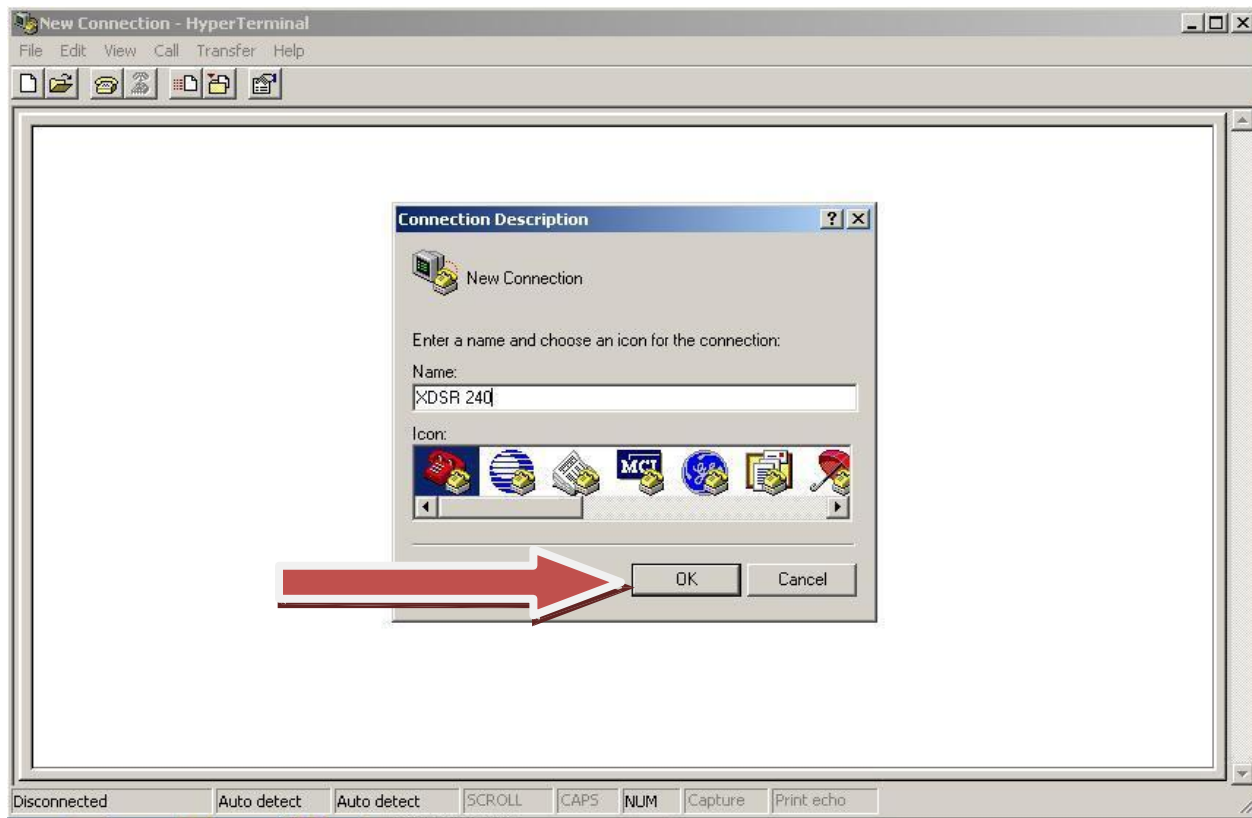
Now open the downloaded file their you can see many file

Right click on “hypertrm.exe” select Open

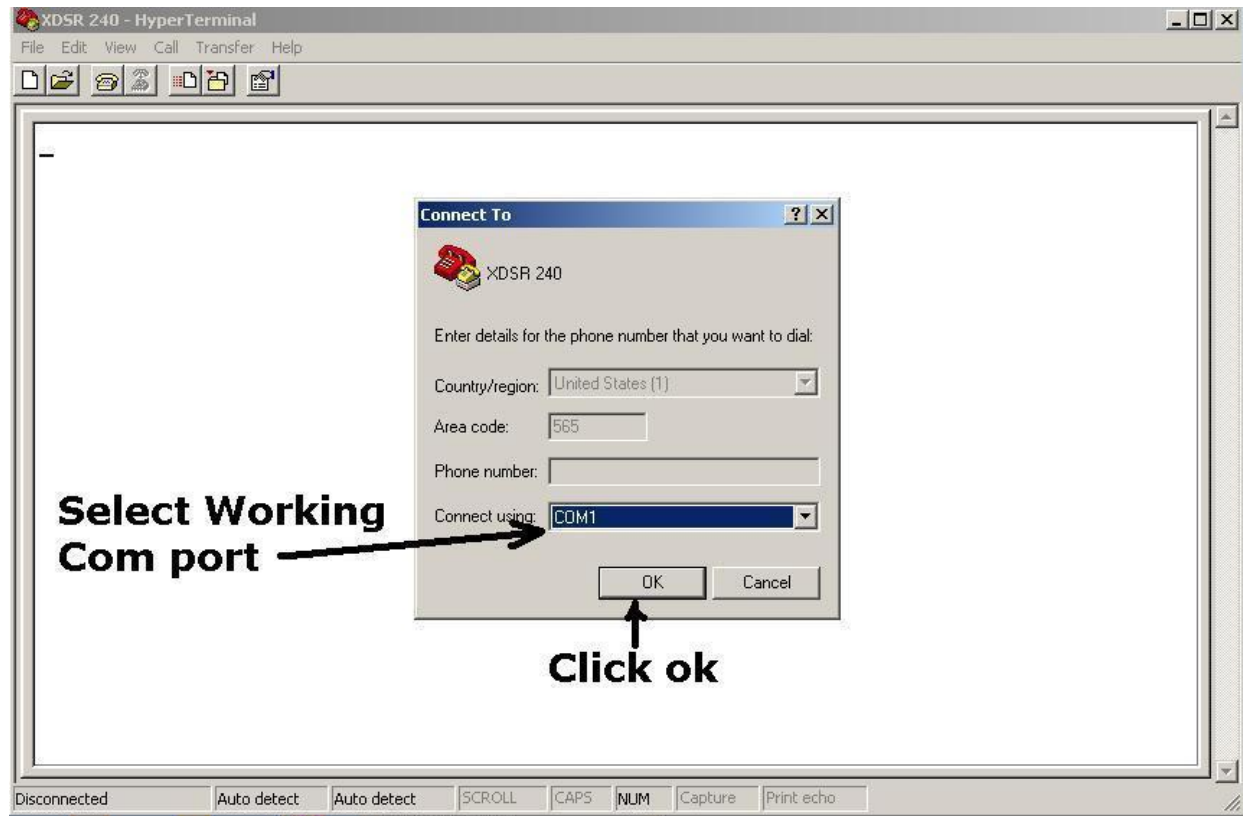


Enter the name for example "XDSR 240"

Then click "OK"

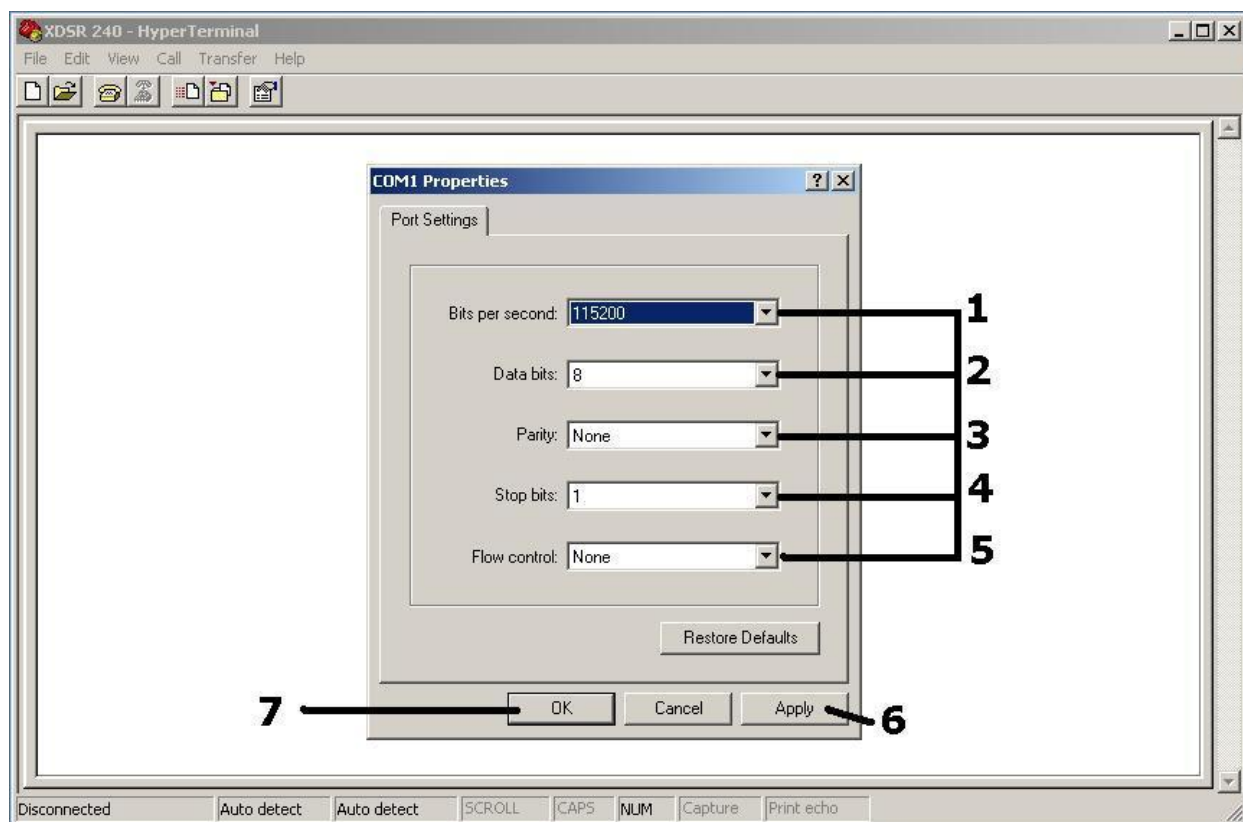


Now you can see the Flowing Screen



Select a working com port And Press OK

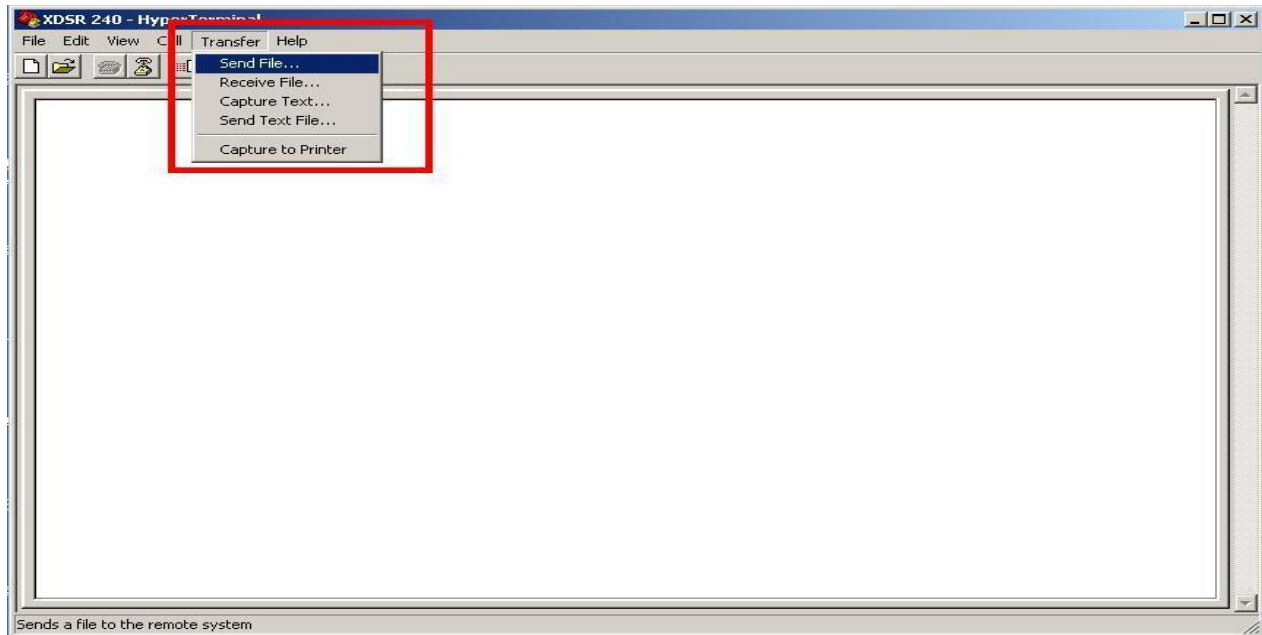
Make the setting as per in the picture below



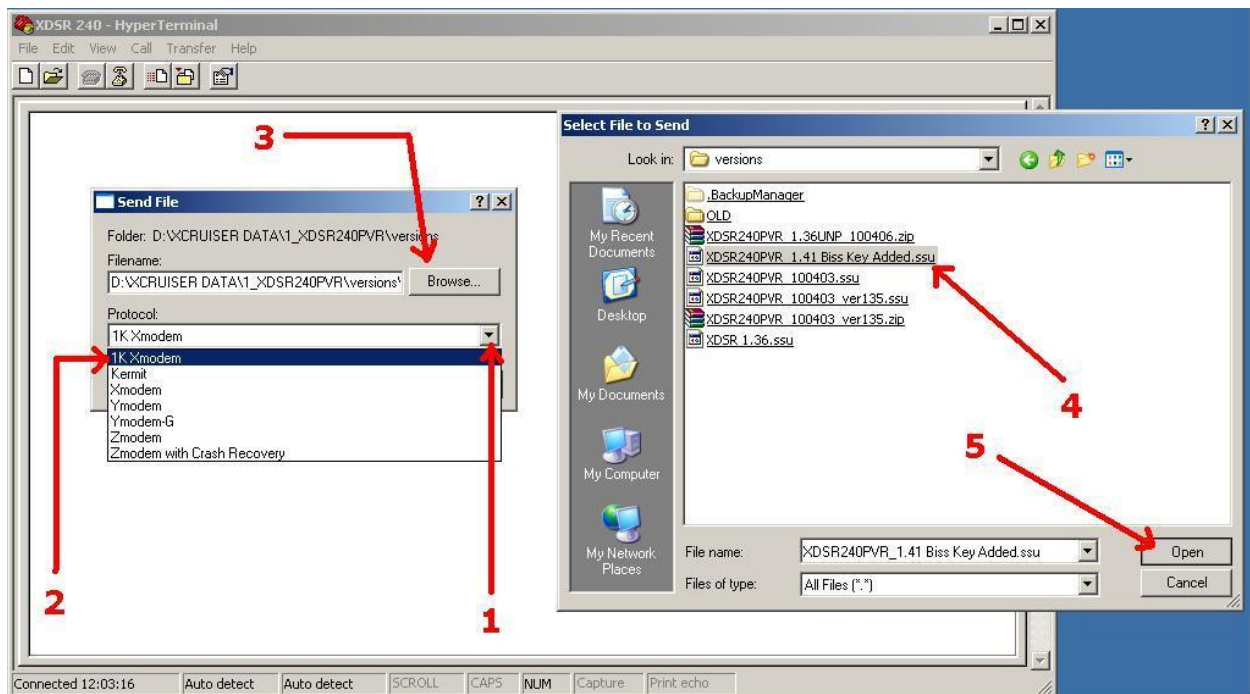
| | |
|-------------------------|---------------|
| Bits per second: | 115200 |
| Data bits: | 8 |
| Parity: | None |
| Stop bits: | 1 |
| Flow control: | None |

Press Apply then Press OK

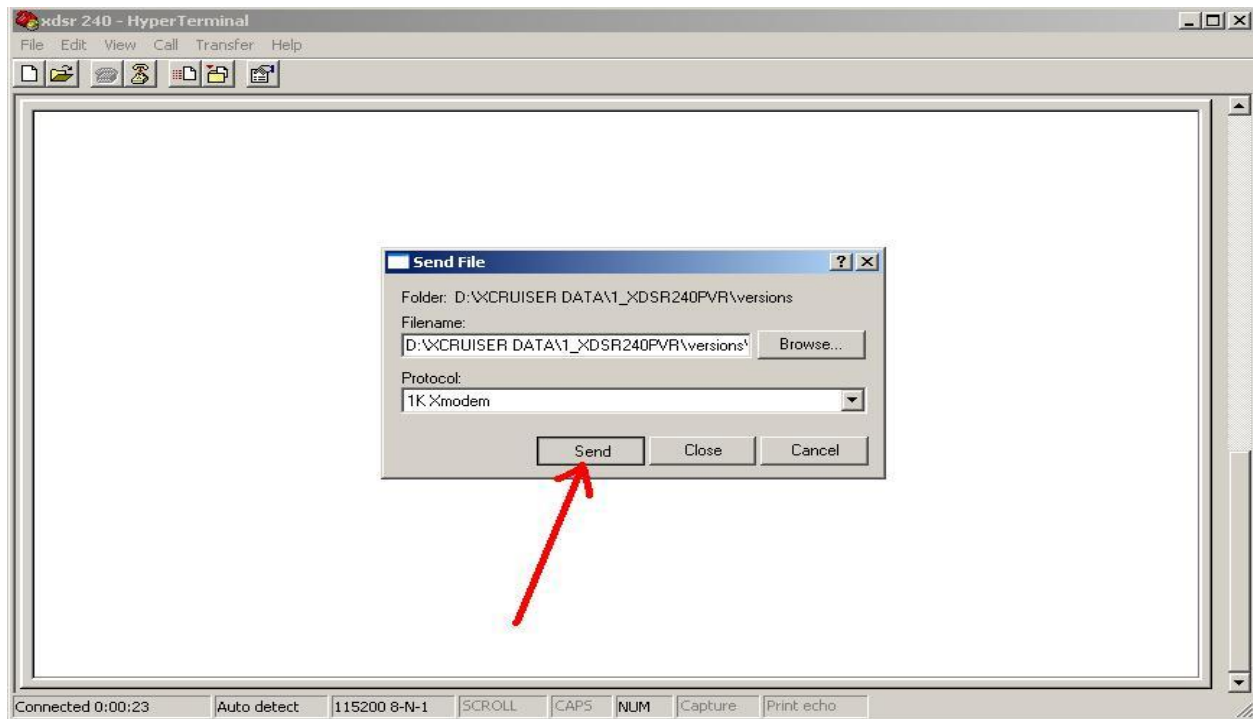
Click on Transfer then select "Send File...."



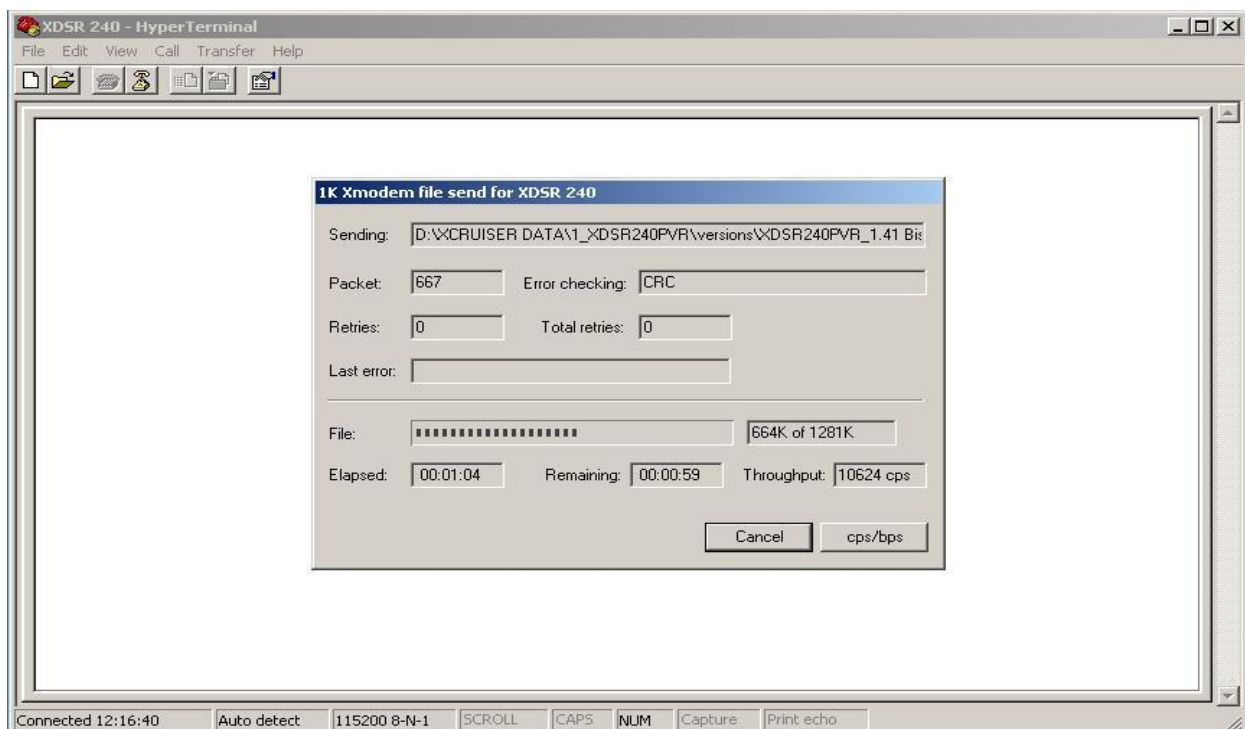
Now Click on "Protocol" and select the "1K Xmodem" Then
Click on "Browse" and Select Software File".ssu" press Open
Look at the picture and follow Step "1 2 3 4 5"



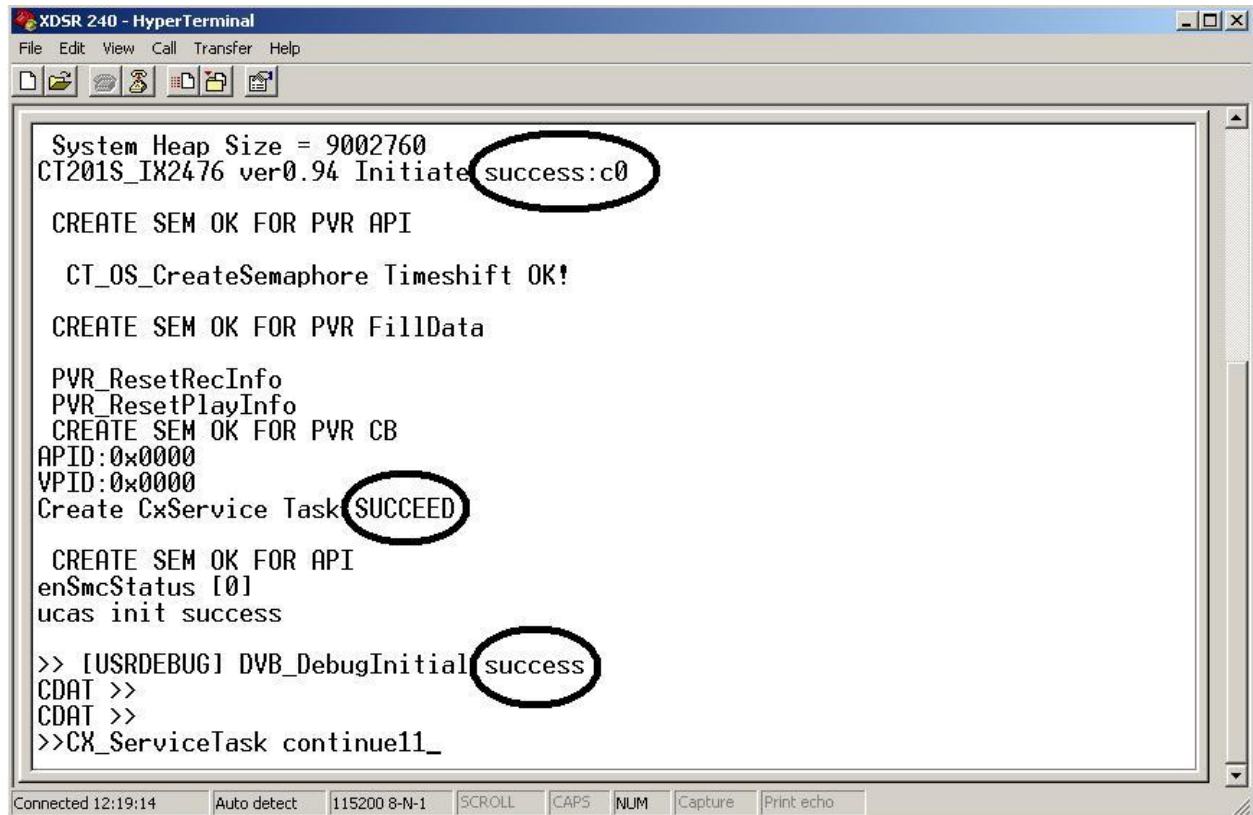
Now Click “Send” to Start Update Process



As you can see in the picture below Update Process is started



However the Update process reaches to End point you can see The flowing Screen with notification of Success that means Software is done successfully if you receive any error Verify your Connection & Setting then start the process from the beginning



```
XDSR 240 - HyperTerminal
File Edit View Call Transfer Help

System Heap Size = 9002760
CT201S_IX2476 ver0.94 Initiate success:c0

CREATE SEM OK FOR PVR API
CT_OS_CreateSemaphore Timeshift OK!
CREATE SEM OK FOR PVR FillData

PVR_ResetRecInfo
PVR_ResetPlayInfo
CREATE SEM OK FOR PVR CB
APID:0x0000
VPID:0x0000
Create CxService Task SUCCEED

CREATE SEM OK FOR API
enSmcStatus [0]
ucas init success

>> [USRDEBUG] DVB_DebugInitial success
CDAT >>
CDAT >>
>>CX_ServiceTask continue11_

Connected 12:19:14 Auto detect 115200 8-N-1 SCROLL CAPS NUM Capture Print echo
```

Turn Off/On your receiver now it's ready to use

Support@xcruiser.net

xcruiserxdsr@gmail.com

xcruiserxdsr@yahoo.com