

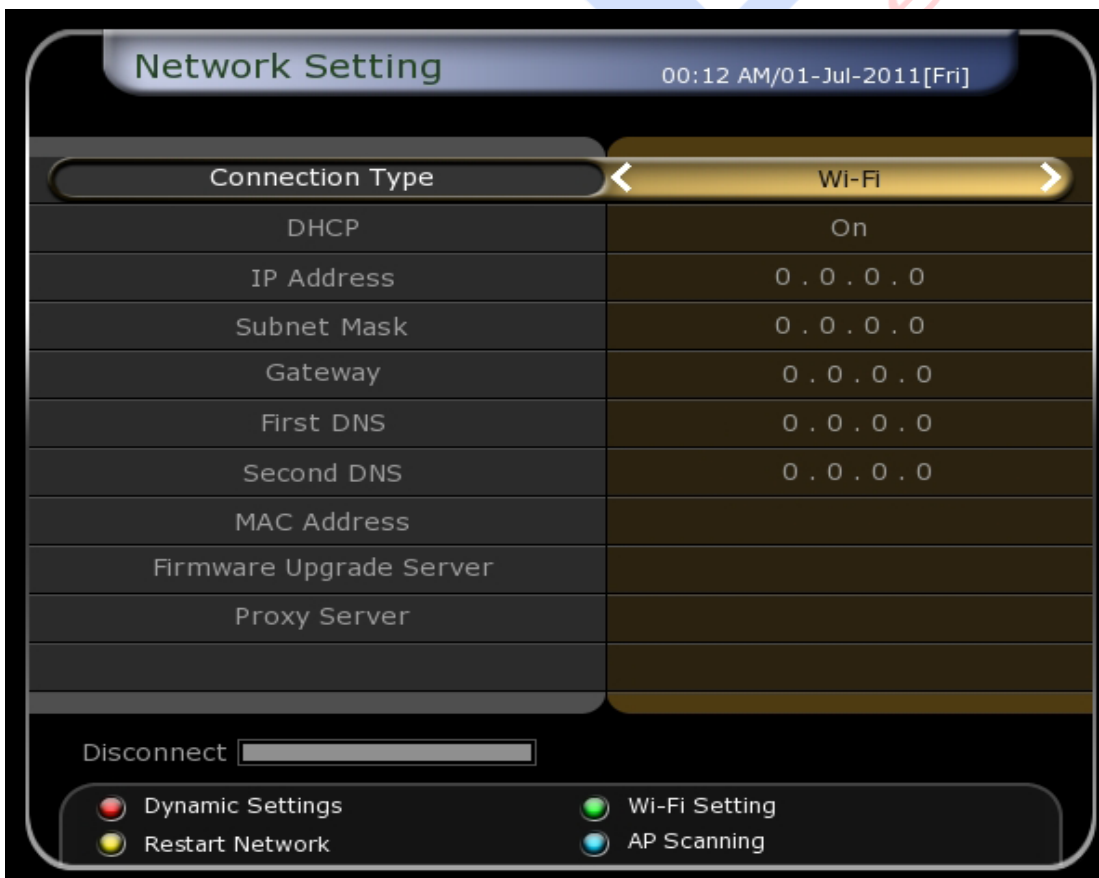
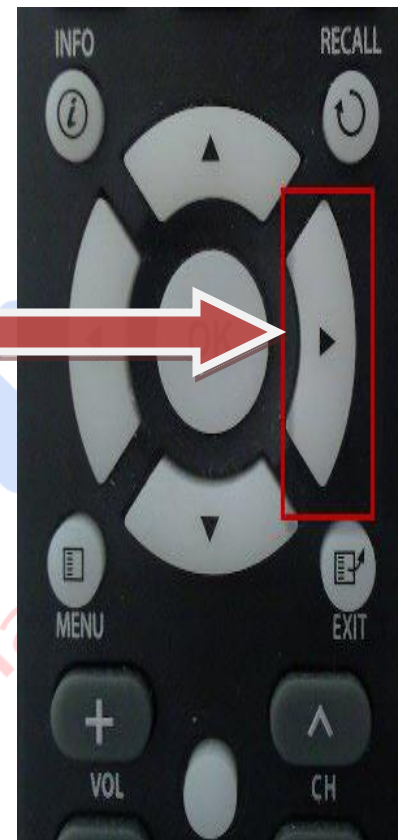
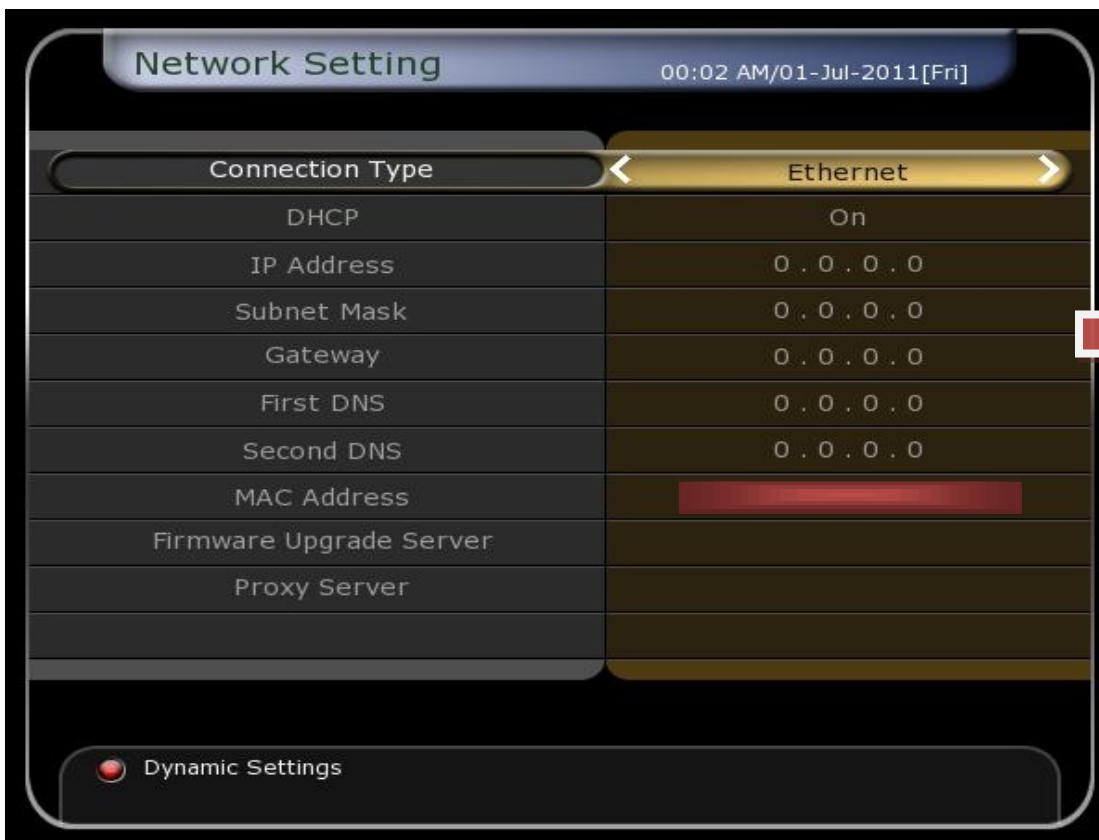
## How to Make Connection With USB Wi-Fi

Connect the Wi-Fi USB to Any Available USB port and Restart the Receiver

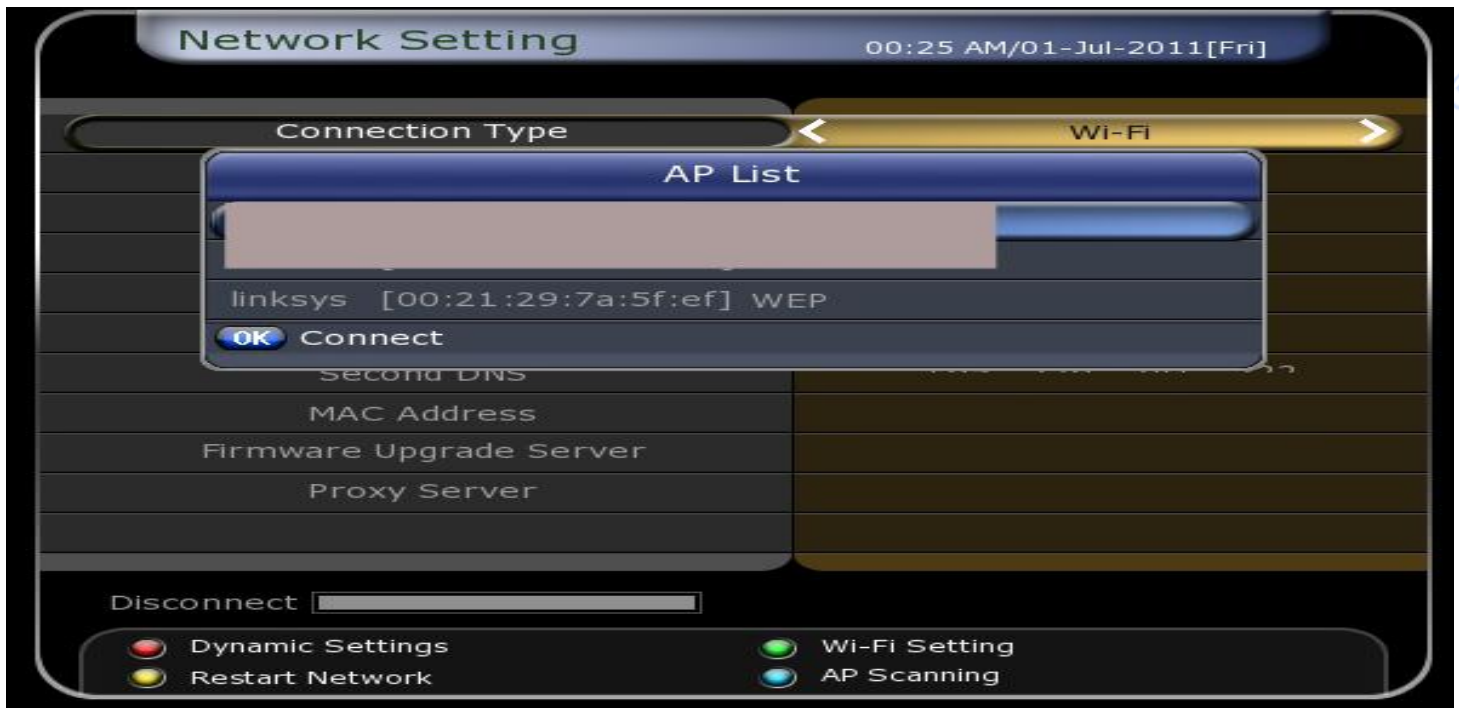


Now press menu then go to Installation=>Network Setting





Press Blue key to Scan Available networks, and then select the Network which is belong to you then press OK key and Enter Password if any then press Connect



Enter the Password of your Wireless Network

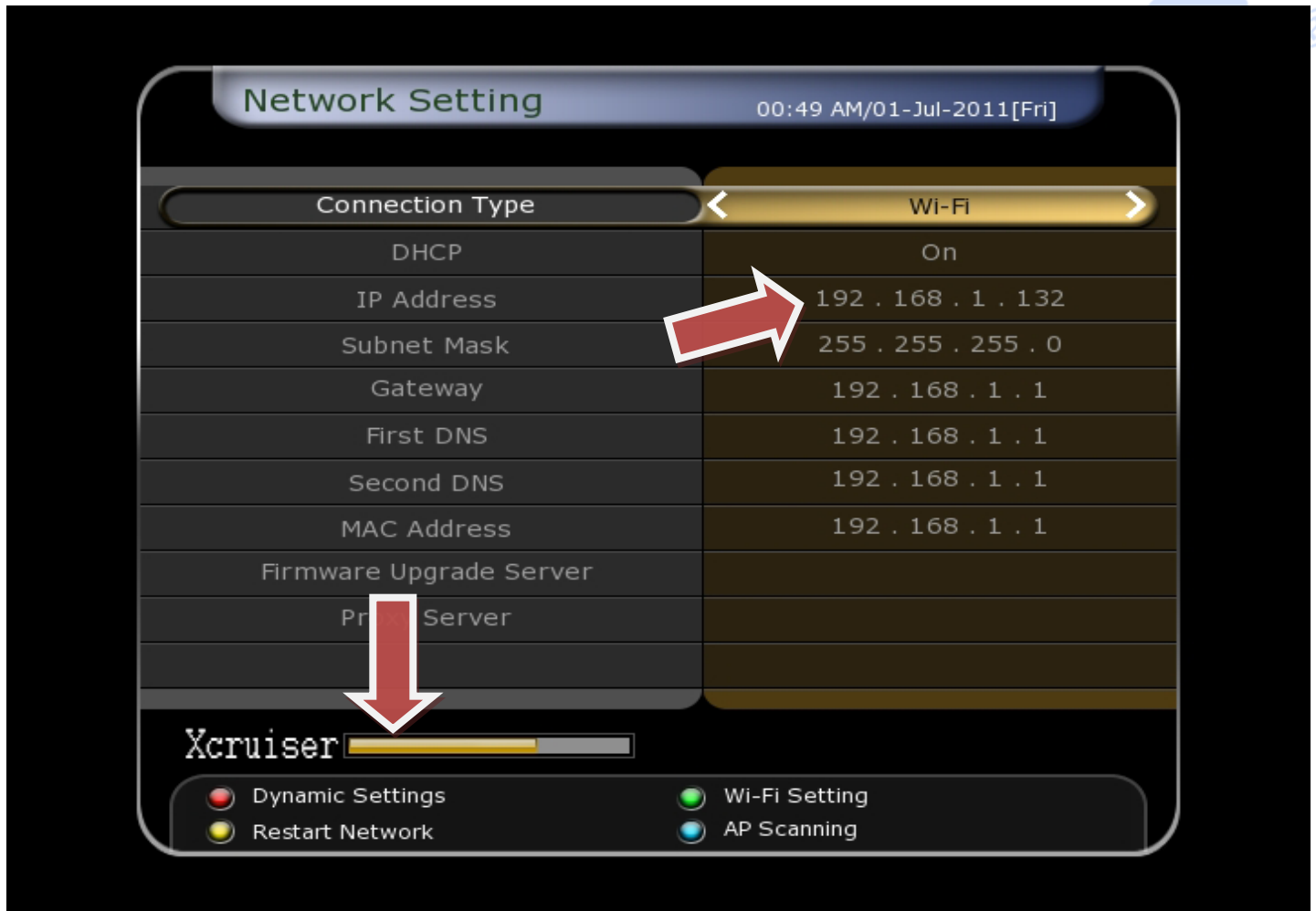


Press OK to connect and wait





If the Connection made successfully then you can see the Signal Strength and IP address and all other information



To test Internet Connection go to Firmware Upgrade Server type this URL in Server [http:// XDSR.CO.CC](http://XDSR.CO.CC) and Press OK if you see the list of software that means your Receiver is connected to Internet

If it shows **Downloading Process Failed** this means internet is not connected verify the Settings and Check your Router and Cables and Wi-Fi Signal

**\*Compatible with all RA Link RT73, RT3070, RT2870 Chipsets**

Company	Model name	Picture
Linksys	WUSB-600N Ver1, Ver2	
	WUSB-100N Ver1, Ver2 WUSB-54GC Ver1,	
TPLINK	WN321G Ver1, Ver2 WN-723N	
D-LINK	DWA-140 Ver1, Ver2	
	DWL-G110	
IPTIME	N100UM	
AnyGate	WKI-XM200UA	
MSI	US54EX	
TENDA	W541U	